



Saint Bernard National Archives

& Hall of Fame

Year

1950

Table of Contents

SBC of America's National Specialty (Best of Breed & Best of Opposite Wins)

Year End Statistics

Hall of Fame Inductees

Hall of Fame Plateaus of Excellence

Championship Titles

Performance Titles (Obedience & Tracking)

Sires of Titled Get

Dams of Titled Get

All-Breed Best In Show Wins

Group Placement Wins (First through Fourth)

Independent Specialty Shows (Best of Breed & Best of Opposite Wins)

Summary of Obedience & Tracking

Novice Scores (Companion Dog)

Open Scores (Companion Dog Excellent)

Advanced Scores (Open and/or Utility Qualifying Score Totals)



The Saint Bernard Club of America's 1950 National Specialty Winners

Date: December 9, 1950

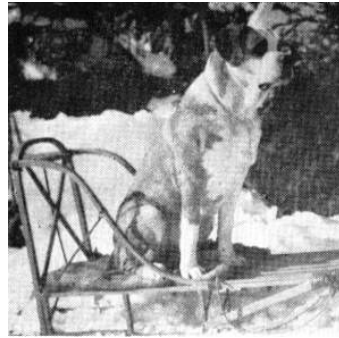
Location: Philadelphia, PA

Judge: Arthur Hesser

Dogs In Competition: 17



BOB: CH Gerd V D Lueg V Edelweiss



BOS: CH Fortuna V Rigi



WB/BOW: Aline V D Roth



WD: Carlo V Sunny Slopes

Saint Bernard National Archives

Hall of Fame

© John Cox

1950 Year End Statistics

27 Saint Bernards Earned 27 AKC Titles

0 Saint Bernards Earned More Than One AKC Title

20 Champions of Record

7 OBEDIENCE TITLES:

6 Companion Dog
1 Companion Dog Excellent
0 Utility Dog
0 Tracking Dog

1936 First Year of Title
1936 First Year of Title
1936 First Year of Title
1936 First Year of Title

Stud Dog For The Year - Producing ? Champion Get:

Brood Bitch For The Year - Producing ? Champion Get:

MOST INDEPENDENT SAINT BERNARD SPECIALTY SHOW WINS:

1 BOB **CH Also V D Roth**
1 BOS **CH Burtons Lady Victoria**

18 GROUP FIRST PLACEMENTS:

CH Gerd V D Lueg V Edelweiss

1924 First Year of Award

9 BEST IN SHOW AT ALL-BREED SHOWS:

CH Gerd V D Lueg V Edelweiss

1924 First Year of Award

Saint Bernard Hall of Fame Inductees For 1950

| <u>Criteria</u> | <u>Induction Category</u> | <u>YR</u> | <u>CH</u> | <u>Name</u> | <u>AKC Performance Titles</u> | <u>M/F</u> | <u>Owner</u> |
|------------------|---------------------------|-----------|-----------|---------------------------|-------------------------------|------------|----------------|
| SBCA Show Wins 2 | | 1950 | CH | Gerd V D Lueg V Edelweiss | | m | Fleischli, Joe |
| | 1 | | | | | | |
| Totals: | | | | | | | 1 |

© This Article is Copyrighted by John Cox
The Saint Bernard National Archives

Saint Bernard Hall of Fame Plateaus of Excellence For 1950

| <u>HoF Plateau of Excellence</u> | <u>YR</u> | <u>CH</u> | <u>Name</u> | <u>M/F</u> | <u>Owner</u> |
|----------------------------------|-------------|-----------|---------------------------|------------|-----------------------|
| Best In Shows 09 1 | 1950 | CH | Gerd V D Lueg V Edelweiss | m | <i>Fleischli, Joe</i> |
| Best In Shows 12 1 | 1950 | CH | Gerd V D Lueg V Edelweiss | m | <i>Fleischli, Joe</i> |
| Best In Shows 15 1 | 1950 | CH | Gerd V D Lueg V Edelweiss | m | <i>Fleischli, Joe</i> |
| Group Firsts 20 1 | 1950 | CH | Gerd V D Lueg V Edelweiss | m | <i>Fleischli, Joe</i> |
| Group Firsts 30 1 | 1950 | CH | Gerd V D Lueg V Edelweiss | m | <i>Fleischli, Joe</i> |

Totals: **5**

Due to the high number of Performance titles they are listed in two (2) Performance Databases - Sorted by Dog or Title
AKC Performance titles started with Obedience back in 1936.

© This Article is Copyrighted by John Cox
The Saint Bernard National Archives

Saint Bernard AKC Championship Titles For 1950

| <u>CH Title Date</u> | <u>CH</u> | <u>Name</u> | <u>Performance Title Year</u> | <u>M</u> | <u>F</u> |
|----------------------|-----------|-----------------------------|-------------------------------|----------|----------|
| | 1950-CH | Also V D Roth | | m | |
| | 1950-CH | Bernadette II | | | f |
| | 1950-CH | Bing Dinger of Janday | | m | |
| | 1950-CH | Burtons Lady Victoria | | | f |
| | 1950-CH | Eros V Alpine Plateau | | m | |
| | 1950-CH | Falko Oenz V Alpine Plateau | | m | |
| | 1950-CH | Flora V Alpine Plateau | | | f |
| | 1950-CH | Heidi Sultane V Oschwand | | | f |
| | 1950-CH | Hero of Dolomount | | | |
| | 1950-CH | Kavalier Duke of Bomar | | m | |
| | 1950-CH | Kavalier Dutchess of Bomar | | | f |
| | 1950-CH | King Dick of The Terrace | | m | |
| | 1950-CH | Kornets Mountain Lady | | | f |
| | 1950-CH | Laura V Waldeck | | | f |
| | 1950-CH | Major V Neu Habsburg | | m | |
| | 1950-CH | Marta Tamerlaine V Ru Rog | | | |
| | 1950-CH | Mr X of Dolomount | | m | |
| | 1950-CH | Powells Lady Lee | | | f |
| | 1950-CH | R Thor V Lee | | m | |
| | 1950-CH | Sir Echo | | m | |

| | | | | |
|----------------|-----------|----------|----|---|
| Totals: | 20 | 0 | 10 | 8 |
|----------------|-----------|----------|----|---|

Due to the high number of Performance titles they are listed in two (2) Performance Databases - Sorted by Dog or Title
 AKC Performance titles started with Obedience back in 1936.

© This Article is Copyrighted by John Cox
 The Saint Bernard National Archives

Saint Bernard AKC Performance Titles For 1950

| CH | Name | Titles | Date | M | F |
|-------------------------|----------------------------|--------|-------------------|---|---|
| CD | | | | | |
| 1950 | | | | | |
| | Barbaras Karen | CD | June 10, 1950 | | f |
| | Delsa of Sunny Slopes | CD | November 12, 1950 | | f |
| 1951-CH | Manitou Barry IX | CD | May 14, 1950 | | |
| | Prince Rasko of Lieu-Belle | CD | December 02, 1950 | m | |
| | R Timber Ace | CD | March 25, 1950 | | |
| 1953-CH | Shadrack V Arnswalde | CD | June 24, 1950 | m | |
| 2 | 6 | 6 | | 2 | 2 |
| CDX | | | | | |
| 1950 | | | | | |
| | Nana | CDX | August 19, 1950 | | f |
| 0 | 1 | 1 | | 0 | 1 |
| Overall Summary: | | | | | |
| 2 | 7 | 7 | | 2 | 3 |

Due to the high number of Performance titles they are listed in two (2) Performance Databases - Sorted by Dog or Title
 AKC Performance titles started with Obedience back in 1936.

© This Article is Copyrighted by John Cox
 The Saint Bernard National Archives

Saint Bernard Sires of AKC Titled Get For 1950

| CH | Sire | CH | Dam | CH | Get | Performance Title Year | M | F |
|----|---------------------------------|----|---------------------------|---------|-----------------------------|------------------------|---|---|
| | Chases Sno King V Oshwand | | Sultane | 1950-CH | Heidi Sultane V Oshwand | | | f |
| CH | Comrade Dinger of Janday | | Bernette of Clairvaux | 1950-CH | Bing Dinger of Janday | | m | |
| | Duke of St. Gothard | | Heidi Hahnzel Laudeen | 1950-CH | Sir Echo | | m | |
| CH | Gerd V D Lueg V Edelweiss | | Erga Oenz | 1950-CH | Falko Oenz V Alpine Plateau | | m | |
| CH | Gerd V D Lueg V Edelweiss | | Zita V Zwing Uri | 1950-CH | Also V D Roth | | m | |
| | Hektor Von Zwing Uri | | Alma Von Reitnau | 1950-CH | Major V Neu Habsburg | | m | |
| | Jo-Anns Son | | Thekla V D Teck V Waldeck | | Barbaras Karen | 1950,1951 | | f |
| CH | Kavalier V Esbo Rollo | | Bernice V Edelweiss | 1950-CH | Kavalier Duke of Bomar | | m | |
| CH | Kavalier V Esbo Rollo | | Bernice V Edelweiss | 1950-CH | Kavalier Dutchess of Bomar | | | f |
| | Kim V Alpine Plateau | | Browns Lady Jean | 1953-CH | Shadrack V Arnswalde | 1950 | m | |
| CH | King Laddie Rasko of Whitebread | | Toots II | | Prince Rasko of Lieu-Belle | 1950 | m | |
| CH | Kurt V Alpine Plateau | CH | Fortuna V Rigi | | Delsa of Sunny Slopes | 1950 | | f |
| CH | Lee V Alpine Plateau | | Gross Schoens Suzette | 1950-CH | Powells Lady Lee | | | f |
| CH | Lee V Alpine Plateau | | Lady Luck of Waldeck | 1950-CH | R Thor V Lee | | m | |
| CH | Mountain Ranger | | Bernadette of Albamont | 1950-CH | Kornets Mountain Lady | | | f |
| CH | Rasakko V Ticino | | Jung Frau V Luthy | 1950-CH | Flora V Alpine Plateau | | | f |
| CH | Rasrakko V Ticino | | Gretchen V Esbo | 1950-CH | Eros V Alpine Plateau | | m | |
| | | | | | Nana | 1949,1950 | | f |
| | | | | 1951-CH | Manitou Barry IX | 1950 | | |
| | | | | | R Timber Ace | 1950 | | |
| | | | | 1950-CH | Bernadette II | | | f |
| | | | | 1950-CH | Burtens Lady Victoria | | | f |
| | | | | 1950-CH | Hero of Dolomount | | | |
| | | | | 1950-CH | King Dick of The Terrace | | m | |
| | | | | 1950-CH | Laura V Waldeck | | | f |
| | | | | 1950-CH | Marta Tamerlaine V Ru Rog | | | |
| | | | | 1950-CH | Mr X of Dolomount | | m | |

| | | | | | |
|----------------|----|----|---|----|----|
| Totals: | 22 | 27 | 7 | 12 | 11 |
|----------------|----|----|---|----|----|

Due to the high number of Performance titles they are listed in two (2) Performance Databases - Sorted by Dog or Title
 AKC Performance titles started with Obedience back in 1936.

© This Article is Copyrighted by John Cox
 The Saint Bernard National Archives

Saint Bernard Dams of AKC Titled Get For 1950

| CH | Dam | CH | Sire | CH | Get | Performance Title Year | M | F |
|----|---------------------------|----|---------------------------------|---------|-----------------------------|------------------------|---|---|
| | Alma Von Reitnau | | Hektor Von Zwing Uri | 1950-CH | Major V Neu Habsburg | | m | |
| | Bernadette of Albamont | CH | Mountain Ranger | 1950-CH | Kornets Mountain Lady | | | f |
| | Bernette of Clairvaux | CH | Comrade Dinger of Janday | 1950-CH | Bing Dinger of Janday | | m | |
| | Bernice V Edelweiss | CH | Kavalier V Esbo Rollo | 1950-CH | Kavalier Duke of Bomar | | m | |
| | Bernice V Edelweiss | CH | Kavalier V Esbo Rollo | 1950-CH | Kavalier Dutchess of Bomar | | | f |
| | Browns Lady Jean | | Kim V Alpine Plateau | 1953-CH | Shadrack V Arnswalde | 1950 | m | |
| | Erga Oenz | CH | Gerd V D Lueg V Edelweiss | 1950-CH | Falko Oenz V Alpine Plateau | | m | |
| CH | Fortuna V Rigi | CH | Kurt V Alpine Plateau | | Delsa of Sunny Slopes | 1950 | | f |
| | Gretchen V Esbo | CH | Rasrakko V Ticino | 1950-CH | Eros V Alpine Plateau | | m | |
| | Gross Schoens Suzette | CH | Lee V Alpine Plateau | 1950-CH | Powells Lady Lee | | | f |
| | Heidi Hahnzel Laudeen | | Duke of St. Gothard | 1950-CH | Sir Echo | | m | |
| | Jung Frau V Luthy | CH | Rasakko V Ticino | 1950-CH | Flora V Alpine Plateau | | | f |
| | Lady Luck of Waldeck | CH | Lee V Alpine Plateau | 1950-CH | R Thor V Lee | | m | |
| | Sultane | | Chases Sno King V Oschwand | 1950-CH | Heidi Sultane V Oschwand | | | f |
| | Thekla V D Teck V Waldeck | | Jo-Anns Son | | Barbaras Karen | 1950,1951 | | f |
| | Toots II | CH | King Laddie Rasko of Whitebread | | Prince Rasko of Lieu-Belle | 1950 | m | |
| | Zita V Zwing Uri | CH | Gerd V D Lueg V Edelweiss | 1950-CH | Also V D Roth | | m | |
| | | | | 1950-CH | Bernadette II | | | f |
| | | | | 1950-CH | Burtons Lady Victoria | | | f |
| | | | | 1950-CH | Hero of Dolomount | | | |
| | | | | 1950-CH | King Dick of The Terrace | | m | |
| | | | | 1950-CH | Laura V Waldeck | | | f |
| | | | | 1951-CH | Manitou Barry IX | 1950 | | |
| | | | | 1950-CH | Marta Tamerlaine V Ru Rog | | | |
| | | | | 1950-CH | Mr X of Dolomount | | m | |
| | | | | | Nana | 1949,1950 | | f |
| | | | | | R Timber Ace | 1950 | | |

| | | | | | |
|----------------|----|----|---|----|----|
| Totals: | 22 | 27 | 7 | 12 | 11 |
|----------------|----|----|---|----|----|

Due to the high number of Performance titles they are listed in two (2) Performance Databases - Sorted by Dog or Title
 AKC Performance titles started with Obedience back in 1936.

© This Article is Copyrighted by John Cox
 The Saint Bernard National Archives

Saint Bernard AKC Best In Show Wins For 1950

| <u>CH</u> | <u>Name</u> | <u>AKC Performance Titles</u> | <u>Date</u> | <u>Show</u> | <u># of P.</u> | <u>BIS</u> | <u># BIS</u> | <u>Comp.</u> | <u>M</u> | <u>F</u> |
|------------------------------------|-------------|-------------------------------|--------------------|----------------------------|----------------|------------|--------------|--------------|----------|----------|
| CHGerd V D Lueg V Edelweiss | | | | | | | | | | |
| | | | February 05, 1950 | Muncie KC, IN | 19 | BIS | 7 | 486 | | |
| | | | March 05, 1950 | Oklahoma City KC, OK | 25 | BIS | 8 | 459 | | |
| | | | March 14, 1950 | Nebraska KC, NE | 27 | BIS | 9 | 291 | | |
| | | | April 23, 1950 | Central Ohio KC, OH | 31 | BIS | 10 | 508 | | |
| | | | May 11, 1950 | Sioux Valley KC, IA | 33 | BIS | 11 | 184 | | |
| | | | July 16, 1950 | Kokomo KC, IN | 41 | BIS | 12 | 259 | | |
| | | | September 16, 1950 | Warren KC, OH | 45 | BIS | 13 | 227 | | |
| | | | September 17, 1950 | Grand River KC, OH | 46 | BIS | 14 | 228 | | |
| | | | November 05, 1950 | Rock River KC, IL | 49 | BIS | 15 | 551 | | |
| Dog's Totals: | | | | | | | 9 | 3,193 | | m |
| CHSenor De La Colonia | | | | | | | | | | |
| | | | August 12, 1950 | Southern Adirondack DC, NY | 12 | BIS | 1 | 309 | | |
| Dog's Totals: | | | | | | | 1 | 309 | | |
| Totals: | | | | | | | 10 | | | |

of P. = Number of placements in Group at the time of the BIS win

Comp. = Number of dogs in competition at the show

© This Article is Copyrighted by John Cox
The Saint Bernard National Archives

Saint Bernard AKC Group Placements For 1950

| <u>CH</u> | <u>Name</u> | <u>AKC Titles</u> M F | <u>Date</u> | <u>Show</u> | <u>1</u> | <u>2</u> | <u>3</u> | <u>4</u> | <u># of P. BIS</u> | <u># BIS</u> | <u>Comp.</u> |
|---------------------------------------|-------------|-------------------------------------|--------------------|---------------------------------|----------|----------|----------|----------|--------------------|--------------|--------------|
| CH Abbot of Janday | | m | | | | | 3 | | 2 | | |
| | | | September 24, 1950 | Butler County KC, PA | | | | | 2 | | |
| | | | September 30, 1950 | Grand Rapids KC, MI | | | 2 | | 3 | | |
| Dog's Totals: | | | | | 2 | 0 | 1 | 1 | 0 | 2 | 0 |
| CH Allports Bruno III | | m | | | | | 3 | | 2 | | |
| | | | October 01, 1950 | Blue And Gray KC, AL | | | | | 2 | | |
| Dog's Totals: | | | | | 1 | 0 | 0 | 1 | 0 | 1 | 0 |
| CH Also V D Roth | | m | | | | | | 4 | 2 | | |
| | | | April 30, 1950 | Minneapolis KC, MN | | | | | 1 | | |
| Dog's Totals: | | | | | 1 | 0 | 0 | 0 | 1 | 0 | 0 |
| CH Arundel V Kavalier St. Erin | | m | | | | | | 4 | 2 | | |
| | | | April 30, 1950 | Yakima Valley KC, WA | | | | | 1 | | |
| Dog's Totals: | | | | | 1 | 0 | 0 | 0 | 1 | 0 | 0 |
| El Dorado Saint | | m | | | | | | | 1 | | |
| | | | September 24, 1950 | Chattanooga KC, TN | | | 2 | | 1 | | |
| Dog's Totals: | | | | | 1 | 0 | 1 | 0 | 0 | 1 | 0 |
| Four Bells Aaron | | m | | | | | | 4 | 1 | | |
| | | | April 29, 1950 | Richland KC, WA | | | | | 1 | | |
| Dog's Totals: | | | | | 1 | 0 | 0 | 0 | 1 | 0 | 0 |
| CH Fritz V Ridgewood | | m | | | | | | 4 | 1 | | |
| | | | April 01, 1950 | Lions KC, OR | | | | | 1 | | |
| Dog's Totals: | | | | | 1 | 0 | 0 | 0 | 1 | 0 | 0 |
| CH Gerd V D Lueg V Edelweiss | | m | | | | | | | | | |
| | | | February 05, 1950 | Muncie KC, IN | 1 | | | | 19 | BIS | 7 |
| | | | February 13, 1950 | Westminster KC, NY | | | | 4 | 20 | | |
| | | | February 19, 1950 | Marion KC, IN | 1 | | | | 21 | | |
| | | | February 26, 1950 | Heart of America KC, MO | | 2 | | | 22 | | |
| | | | March 01, 1950 | Crawford County KC, OH | | 2 | | | 23 | | |
| | | | March 03, 1950 | Wichita KC, KS | 1 | | | | 24 | | |
| | | | March 05, 1950 | Oklahoma City KC, OK | 1 | | | | 25 | BIS | 8 |
| | | | March 07, 1950 | Lawton Fort Sill KC, OK | | 2 | | | 26 | | |
| | | | March 14, 1950 | Nebraska KC, NE | 1 | | | | 27 | BIS | 9 |
| | | | March 16, 1950 | St. Joseph KC, MO | 1 | | | | 28 | | |
| | | | March 25, 1950 | International KC of Chicago, IL | | 2 | | | 29 | | |
| | | | April 02, 1950 | Hoosier KC, IN | | 2 | | | 30 | | |
| | | | April 23, 1950 | Central Ohio KC, OH | 1 | | | | 31 | BIS | 10 |
| | | | May 10, 1950 | Cornhusker KC of Lincoln, NE | 1 | | | | 32 | | |
| | | | May 11, 1950 | Sioux Valley KC, IA | 1 | | | | 33 | BIS | 11 |
| | | | May 14, 1950 | Waterloo KC, IA | | | 3 | | 34 | | |

| <u>CH</u> | <u>Name</u> | <u>AKC Titles</u> | <u>M</u> | <u>F</u> | <u>Date</u> | <u>Show</u> | <u>1</u> | <u>2</u> | <u>3</u> | <u>4</u> | <u># of P.</u> | <u>BIS</u> | <u># BIS</u> | <u>Comp.</u> |
|----------------------|--|-------------------|----------|----------|--------------------|-------------------------------|-----------|-----------|----------|----------|----------------|------------|--------------|--------------|
| | | | | | May 18, 1950 | Port City KC, IA | | 2 | | | 35 | | | |
| | | | | | May 20, 1950 | Tri City KC, IL | | 2 | | | 36 | | | |
| | | | | | May 21, 1950 | Scott County KC, IA | 1 | | | | 37 | | | |
| | | | | | July 01, 1950 | Blackhawk KC, WI | 1 | | | | 38 | | | |
| | | | | | July 02, 1950 | Badger KC, WI | 1 | | | | 39 | | | |
| | | | | | July 03, 1950 | Northeastern Wisconsin KC, WI | 1 | | | | 40 | | | |
| | | | | | July 16, 1950 | Kokomo KC, IN | 1 | | | | 41 | BIS | 12 | 259 |
| | | | | | September 03, 1950 | Sandemac KC, IL | | 2 | | | 42 | | | |
| | | | | | September 09, 1950 | Fox River Valley KC, IL | 1 | | | | 43 | | | |
| | | | | | September 10, 1950 | Chicago West Suburban KC, IL | | 2 | | | 44 | | | |
| | | | | | September 16, 1950 | Warren KC, OH | 1 | | | | 45 | BIS | 13 | 227 |
| | | | | | September 17, 1950 | Grand River KC, OH | 1 | | | | 46 | BIS | 14 | 228 |
| | | | | | September 23, 1950 | Laporte County KC, IN | | 2 | | | 47 | | | |
| | | | | | September 24, 1950 | Steel City KC, IN | | 2 | | | 48 | | | |
| | | | | | November 05, 1950 | Rock River KC, IL | 1 | | | | 49 | BIS | 15 | 551 |
| Dog's Totals: | | | | | | 31 | 18 | 11 | 1 | 1 | 31 | 9 | 3193 | |
| CH | Gerda V D Lueg V Alpine Plateau | | | f | | | | | | | | | | |
| | | | | | August 09, 1950 | Richmond DFC, CA | | | 3 | | 9 | | | |
| | | | | | August 20, 1950 | San Joaquin KC, CA | | 2 | | | 10 | | | |
| | | | | | September 02, 1950 | Klamath KC, OR | | | 3 | | 11 | | | |
| | | | | | September 03, 1950 | Southern Oregon KC, OR | | | 3 | | 12 | | | |
| | | | | | November 12, 1950 | Eden KC, CA | | | | 4 | 13 | | | |
| Dog's Totals: | | | | | | 5 | 0 | 1 | 3 | 1 | 5 | 0 | 0 | |
| CH | Gero Oenz V Edelweiss | | | m | | | | | | | | | | |
| | | | | | March 19, 1950 | Mississippi KC, MS | 1 | | | | 11 | | | |
| | | | | | October 07, 1950 | Geneva Lake KC, WI | | 2 | | | 12 | | | |
| | | | | | October 13, 1950 | Shreveport KC, LA | 1 | | | | 13 | | | |
| | | | | | October 17, 1950 | Southwest Louisiana KC, LA | | 2 | | | 14 | | | |
| | | | | | October 22, 1950 | Mississippi Coast KC, MS | | 2 | | | 15 | | | |
| | | | | | October 24, 1950 | Mobile KC, AL | | | | 4 | 16 | | | |
| | | | | | October 29, 1950 | Birmingham KC, AL | | 2 | | | 17 | | | |
| Dog's Totals: | | | | | | 7 | 2 | 4 | 0 | 1 | 7 | 0 | 0 | |
| CH | King Dick of The Terrace | | | m | | | | | | | | | | |
| | | | | | October 08, 1950 | Pasadena KC, CA | | | | 4 | 1 | | | |
| Dog's Totals: | | | | | | 1 | 0 | 0 | 0 | 1 | 1 | 0 | 0 | |
| CH | Kiowa Colonel of Tommar | | | m | | | | | | | | | | |
| | | | | | April 23, 1950 | Mid Continent KC, OK | | | 3 | | 3 | | | |
| Dog's Totals: | | | | | | 1 | 0 | 0 | 1 | 0 | 1 | 0 | 0 | |
| CH | Kurt V Alpine Plateau | | | m | | | | | | | | | | |
| | | | | | May 13, 1950 | Springfield KC, MA | | | | 4 | 10 | | | |
| | | | | | May 21, 1950 | Long Island KC, NY | 1 | | | | 11 | | | |
| | | | | | July 23, 1950 | Holyoke KC, MA | | | | 4 | 12 | | | |
| | | | | | September 09, 1950 | Brockton Fair KC, MA | | | 3 | | 13 | | | |

| CH | Name | AKC Titles | M | F | Date | Show | 1 | 2 | 3 | 4 | # of P. | BIS | # BIS | Comp. |
|---------------------------------|------|------------|---|---|--------------------|----------------------------|-----------|-----------|-----------|-----------|-----------|----------|-------|------------|
| | | | | | November 19, 1950 | Newark KC, NJ | | | 3 | | 14 | | | |
| | | | | | December 02, 1950 | Brooklyn KC, NY | | | 3 | | 15 | | | |
| Dog's Totals: | | | | | | 6 | 1 | 0 | 3 | 2 | 6 | 0 | | 0 |
| CH Lutz V Alpine Plateau | | | | | | m | | | | | | | | |
| | | | | | March 26, 1950 | Glendale KC, CA | | | | 4 | 1 | | | |
| Dog's Totals: | | | | | | 1 | 0 | 0 | 0 | 1 | 1 | 0 | | 0 |
| CH Major V Neu Habsburg | | | | | | m | | | | | | | | |
| | | | | | June 17, 1950 | Bryn Mawr KC, PA | | | 3 | | 1 | | | |
| | | | | | September 17, 1950 | Berks County KC, PA | | | 3 | | 2 | | | |
| Dog's Totals: | | | | | | 2 | 0 | 0 | 2 | 0 | 2 | 0 | | 0 |
| CH Mr. X of Dolomount | | | | | | m | | | | | | | | |
| | | | | | April 22, 1950 | Old Dominion KC, VA | | | 3 | | 1 | | | |
| Dog's Totals: | | | | | | 1 | 0 | 0 | 1 | 0 | 1 | 0 | | 0 |
| CH Senior De La Colnia | | | | | | m | | | | | | | | |
| | | | | | March 18, 1950 | Harrisburg KC, PA | | 2 | | | 4 | | | |
| | | | | | April 02, 1950 | Mahoning Shenango KC, OH | 1 | | | | 5 | | | |
| | | | | | April 23, 1950 | Baltimore County KC, MD | | 2 | | | 6 | | | |
| | | | | | May 13, 1950 | Delaware County KC, PA | | 2 | | | 7 | | | |
| | | | | | May 14, 1950 | Lancaster KC, PA | | 2 | | | 8 | | | |
| | | | | | May 20, 1950 | Western Penn KA, PA | | | 3 | | 9 | | | |
| | | | | | June 25, 1950 | Staten Island KC, NY | | | 3 | | 10 | | | |
| | | | | | July 23, 1950 | Bald Eagle KC, PA | | | | 4 | 11 | | | |
| | | | | | August 12, 1950 | Southern Adirondack DC, NY | 1 | | | | 12 | BIS | 1 | 309 |
| | | | | | August 13, 1950 | Mohawk Valley KC, NY | | 2 | | | 13 | | | |
| | | | | | August 20, 1950 | Susque Nango KC, NY | 1 | | | | 14 | | | |
| | | | | | September 16, 1950 | Lehigh Valley KC, PA | | | | 4 | 15 | | | |
| | | | | | November 05, 1950 | Union County KC, NY | | | | 4 | 16 | | | |
| Dog's Totals: | | | | | | 13 | 3 | 5 | 2 | 3 | 13 | 1 | | 309 |
| Overall Group Totals: | | | | | | 76 | 24 | 23 | 15 | 14 | 10 | | | |

of P. = Number of placements in Group
 Comp. = Number of dogs in competition at the show

© This Article is Copyrighted by John Cox
 The Saint Bernard National Archives

Saint Bernard Specialty Show Wins For 1950

| CH | Name | ME | AKC Titles | Date | Show | BOB | BOS | W | COMP. | HIT | T |
|--|---------------------------|----|------------|-------------------|------------------------|----------|----------|---|-------|----------|---|
| Independent Specialty Shows, Trials & Tests | | | | | | | | | | | |
| CH | Also V D Roth | | | | | | | | | | |
| | | m | | June 24, 1950 | Ohio SBC, OH | BOB | | 1 | 17 | | |
| Dog's totals: | | | | | | 1 | 0 | 1 | 17 | 0 | 0 |
| CH | Burtons Lady Victoria | | | | | | | | | | |
| | | f | | June 24, 1950 | Ohio SBC, OH | | BOS | 1 | 17 | | |
| Dog's totals: | | | | | | 0 | 1 | 1 | 17 | 0 | 0 |
| CH | Fortuna V Rigi | | | | | | | | | | |
| | | f | | December 09, 1950 | SBC of America # 13 PA | | BOS | 1 | 17 | | |
| Dog's totals: | | | | | | 0 | 1 | 1 | 17 | 0 | 0 |
| CH | Gerd V D Lueg V Edelweiss | | | | | | | | | | |
| | | m | | December 09, 1950 | SBC of America # 13 PA | BOB | | 2 | 17 | | |
| Dog's totals: | | | | | | 1 | 0 | 1 | 17 | 0 | 0 |
| Overall totals: | | | | | | 2 | 2 | | | 0 | |

BOS was first awarded in 1942
 There were NO National Specialties in 1944, 1945, 1947 & 1962
 W = Number of BOB/BOS win at independent specialty shows
 Comp. = Number of dogs in competition at the show
 T = Number of HIT win at independent specialty trials
 * = AKC Rescinded award

© This Article is Copyrighted by John Cox
 The Saint Bernard National Archives

Saint Bernard AKC Obedience Trials & Tracking Tests For 1950

| CH | AKC Performance Titles | Date | Trial or Test | Track | NA | NB | OA | OB | UA | UB | 1st | 2nd | 3rd | 4th | UDX | HIT | M | E | | |
|--|------------------------|-------------------|----------------------------|-------|--------|--------|--------|--------|-----|-----|-----|-----|-----|-----|-----|-----|---|---|---|---|
| Novice Barbaras Karen | | | | | | | | | | | | | | | | | | | | |
| | | May 21, 1950 | Long Island KC, NY | | 184.00 | | | | | | | | | | | | | | | |
| | | May 28, 1950 | Mid Jersey CDTC, NJ | | 176.00 | | | | | | | | | | | | | | | |
| | CD | June 10, 1950 | Greenwich KC, CT | | 182.00 | | | | | | | | | | | | | | | |
| Class score averages and placement totals: | | | | | 180.67 | ERR | ERR | ERR | ERR | ERR | 0 | 0 | 0 | 0 | 0 | 0 | 0 | 0 | | |
| Number of times qualifying and in each class: | | | | | 3 | 0 | 3 | 0 | 0 | 0 | 0 | 0 | 0 | 0 | 0 | 0 | 0 | 0 | 0 | f |
| Novice Butch III of Glen Cove | | | | | | | | | | | | | | | | | | | | |
| | | March 12, 1950 | Saw Mill River KC, NY | | 177.00 | | | | | | | | | | | | | | | |
| Class score averages and placement totals: | | | | | ERR | 177.00 | ERR | ERR | ERR | ERR | 0 | 0 | 0 | 0 | 0 | 0 | 0 | 0 | 0 | |
| Number of times qualifying and in each class: | | | | | 1 | 0 | 0 | 1 | 0 | 0 | 0 | 0 | 0 | 0 | 0 | 0 | 0 | 0 | 0 | f |
| Novice Delsa of Sunny Slopes | | | | | | | | | | | | | | | | | | | | |
| | | October 15, 1950 | Del Monte KC, CA | | 191.00 | | | | | | | 2 | | | | | | | | |
| | | November 05, 1950 | Sun Maid KC of Fresno, CA | | 191.00 | | | | | | | | 3 | | | | | | | |
| | CD | November 12, 1950 | Eden KC, CA | | 189.00 | | | | | | | | | | | | | | | |
| Class score averages and placement totals: | | | | | 190.33 | ERR | ERR | ERR | ERR | ERR | 0 | 1 | 1 | 0 | 0 | 0 | 0 | 0 | 0 | f |
| Number of times qualifying and in each class: | | | | | 3 | 0 | 3 | 0 | 0 | 0 | 0 | 0 | 0 | 0 | 0 | 0 | 0 | 0 | 0 | f |
| Novice 1949-CH Lutz V Alpine Plateau | | | | | | | | | | | | | | | | | | | | |
| | 1949-CH | June 04, 1950 | Pasadena KC, CA | | 170.00 | | | | | | | | | | | | | | | |
| | 1949-CH | June 24, 1950 | Harbor Cities KC, CA | | 171.00 | | | | | | | | | | | | | | | |
| Class score averages and placement totals: | | | | | 170.50 | ERR | ERR | ERR | ERR | ERR | 0 | 0 | 0 | 0 | 0 | 0 | 0 | 0 | 0 | m |
| Number of times qualifying and in each class: | | | | | 2 | 0 | 2 | 0 | 0 | 0 | 0 | 0 | 0 | 0 | 0 | 0 | 0 | 0 | 0 | m |
| Novice 1951-CH Manitou Barry IX | | | | | | | | | | | | | | | | | | | | |
| | 1951-CH | February 18, 1950 | 1st Co. Gov. Ft. Guard, CT | | 192.00 | | | | | | | | | | | | | | | |
| | 1951-CH | April 09, 1950 | Providence County KC, RI | | 186.00 | | | | | | | | | | | | | | | |
| | 1951-CH | May 14, 1950 | Windham County KC, CT | | 188.00 | | | | | | | | | | | | | | | |
| Class score averages and placement totals: | | | | | 188.67 | ERR | ERR | ERR | ERR | ERR | 0 | 0 | 0 | 0 | 0 | 0 | 0 | 0 | 0 | m |
| Number of times qualifying and in each class: | | | | | 3 | 0 | 3 | 0 | 0 | 0 | 0 | 0 | 0 | 0 | 0 | 0 | 0 | 0 | 0 | m |
| Open Nana | | | | | | | | | | | | | | | | | | | | |
| | CD | March 18, 1950 | Manchester KC, NH | | 188.00 | | | | | | | | | | | | | | | |
| | CD | June 04, 1950 | Farmingham District KC, MA | | 173.00 | | | | | | | | | | | | | | | |
| | CDX | August 19, 1950 | North Shore KC, MA | | 183.00 | | | | | | | | | | | | | | | |
| | CDX | December 02, 1950 | South Shore DTC, MA | | 176.00 | | | | | | | | | | | | | | | |
| Class score averages and placement totals: | | | | | ERR | ERR | 181.33 | 176.00 | ERR | ERR | 0 | 0 | 0 | 0 | 0 | 0 | 0 | 0 | 0 | 0 |

| CH | AKC Performance Titles | Date | Trial or Test | Track | NA | NB | OA | OB | UA | UB | 1st | 2nd | 3rd | 4th | UDX | HIT | M | F | |
|--|------------------------|-------------------|---------------------------------|-------|--------|-----|-----|-----|-----|-----|-----|-----|-----|-----|-----|-----|---|---|---|
| Number of times qualifying and in each class: | | | | 4 | 0 | 0 | 0 | 3 | 1 | 0 | 0 | | | | | | | | f |
| Nana of Vernon | | | | | | | | | | | | | | | | | | | |
| Novice | | | | | | | | | | | | | | | | | | | |
| | | October 29, 1950 | Cleveland All-Breed KC, OH | | 187.00 | | | | | | | | | | | | | | |
| | | December 09, 1950 | Philadelphia DTC, PA | | 185.00 | | | | | | | | | | | | | | |
| Class score averages and placement totals: | | | | | 186.00 | ERR | ERR | ERR | ERR | ERR | 0 | 0 | 0 | 0 | 0 | 0 | 0 | | |
| Number of times qualifying and in each class: | | | | 2 | 0 | 2 | 0 | 0 | 0 | 0 | 0 | 0 | | | | | | | f |
| Parquins St. Nero | | | | | | | | | | | | | | | | | | | |
| Novice | | | | | | | | | | | | | | | | | | | |
| | | May 07, 1950 | ODTC of Forestville, CT | | 176.00 | | | | | | | | | | | | | | |
| Class score averages and placement totals: | | | | | 176.00 | ERR | ERR | ERR | ERR | ERR | 0 | 0 | 0 | 0 | 0 | 0 | 0 | | |
| Number of times qualifying and in each class: | | | | 1 | 0 | 1 | 0 | 0 | 0 | 0 | 0 | 0 | | | | | | | m |
| Prince Rasko of Lieu-Belle | | | | | | | | | | | | | | | | | | | |
| Novice | | | | | | | | | | | | | | | | | | | |
| | | May 07, 1950 | Rhode Island KC, RI | | 170.00 | | | | | | | | | | | | | | |
| | | November 05, 1950 | OTC of Rhode Island, RI | | 185.00 | | | | | | | | | | | | | | |
| | CD | December 02, 1950 | South Shore DTC, MA | | 182.00 | | | | | | | | | | | | | | |
| Class score averages and placement totals: | | | | | 179.00 | ERR | ERR | ERR | ERR | ERR | 0 | 0 | 0 | 0 | 0 | 0 | 0 | | |
| Number of times qualifying and in each class: | | | | 3 | 0 | 3 | 0 | 0 | 0 | 0 | 0 | 0 | | | | | | | m |
| R Timber Ace | | | | | | | | | | | | | | | | | | | |
| Novice | | | | | | | | | | | | | | | | | | | |
| | | January 15, 1950 | Wisconsin KC, WI | | 192.00 | | | | | | | | | | | | | | |
| | | January 29, 1950 | Northshore DTC, IL | | 186.00 | | | | | | | | | | | | | | |
| | CD | March 25, 1950 | International KC of Chicago, IL | | 195.00 | | | | | | | | | | | | | | |
| Class score averages and placement totals: | | | | | 191.00 | ERR | ERR | ERR | ERR | ERR | 0 | 0 | 0 | 0 | 0 | 0 | 0 | | |
| Number of times qualifying and in each class: | | | | 3 | 0 | 3 | 0 | 0 | 0 | 0 | 0 | 0 | | | | | | | |
| Ratz V Alpine Plateau | | | | | | | | | | | | | | | | | | | |
| Novice | | | | | | | | | | | | | | | | | | | |
| | | January 28, 1950 | Golden Gate KC, CA | | 182.00 | | | | | | | | | | | | | | |
| Class score averages and placement totals: | | | | | 182.00 | ERR | ERR | ERR | ERR | ERR | 0 | 0 | 0 | 0 | 0 | 0 | 0 | | |
| Number of times qualifying and in each class: | | | | 1 | 0 | 1 | 0 | 0 | 0 | 0 | 0 | 0 | | | | | | | |
| 1953-CH Shadrack V Arnswalde | | | | | | | | | | | | | | | | | | | |
| Novice | | | | | | | | | | | | | | | | | | | |
| | 1953-CH | May 20, 1950 | Beverly Riveria KC, CA | | 183.00 | | | | | | | | | | | | | | |
| | 1953-CH | June 04, 1950 | Pasadena KC, CA | | 190.00 | | | | | | | | | | | | | | |
| | 1953-CH | June 24, 1950 | Harbor Cities KC, CA | | 193.00 | | | | | | | | | | | | | | |
| | CD | | | | | | | | | | | | | | | | | | |
| Class score averages and placement totals: | | | | | 188.67 | ERR | ERR | ERR | ERR | ERR | 0 | 0 | 0 | 0 | 0 | 0 | 0 | | |
| Number of times qualifying and in each class: | | | | 3 | 0 | 3 | 0 | 0 | 0 | 0 | 0 | 0 | | | | | | | m |
| Thor Duncan of Park Run | | | | | | | | | | | | | | | | | | | |
| Novice | | | | | | | | | | | | | | | | | | | |
| | | June 04, 1950 | Stone City KC, IL | | 170.00 | | | | | | | | | | | | | | |
| | | June 18, 1950 | Skokie Valley KC, IL | | 178.00 | | | | | | | | | | | | | | |

| <u>CH</u> | <u>AKC Performance Titles</u> | <u>Date</u> | <u>Trial or Test</u> | <u>Track</u> | <u>NA</u> | <u>NB</u> | <u>OA</u> | <u>OB</u> | <u>UA</u> | <u>UB</u> | <u>1st</u> | <u>2nd</u> | <u>3rd</u> | <u>4th</u> | <u>UDX</u> | <u>HIT</u> | <u>M</u> | <u>F</u> |
|--|-------------------------------|-------------|----------------------|--------------|-----------|-----------|-----------|-----------|-----------|-----------|------------|------------|------------|------------|------------|------------|----------|----------|
| Class score averages and placement totals: | | | | | 174.00 | ERR | ERR | ERR | ERR | ERR | 0 | 0 | 0 | 0 | 0 | 0 | | |
| Number of times qualifying and in each class: | | | 2 | 0 | 2 | 0 | 0 | 0 | 0 | 0 | | | | | | | | m |
| Overall class averages and placement totals: | | | | | 183.62 | 177.00 | 181.33 | 176.00 | ERR | ERR | 0 | 1 | 1 | 0 | | | 0 | |
| Overall qualifying scores: | | | 31 | 0 | 26 | 1 | 3 | 1 | 0 | 0 | | | | | | | | |

Obedience Scores changed to current system in 1948. Prior to 1948 the scoring system was different.
The Maximum Early Scores were: Novice 100 points, Open 250 points & Utility 400 points.
Early Titles required ONLY TWO qualifying scores.

© This Article is Copyrighted by John Cox
The Saint Bernard National Archives

Saint Bernard AKC Novice {CD} Obedience Scores For 1950

| CH | AKC Performance Titles | Date | Trial | NA | NB | 1st | 2nd | 3rd | 4th | HIT | A | N | S | M | F |
|--|------------------------|-------------------|----------------------------|---------------|---------------|----------|----------|----------|----------|----------|----------|----------|----------|----------|----------|
| Barbaras Karen | | | | | | | | | | | | | | | |
| | | May 21, 1950 | Long Island KC, NY | 184.00 | | | | | | | | | | | |
| | | May 28, 1950 | Mid Jersey CDTC, NJ | 176.00 | | | | | | | | | | | |
| | CD | June 10, 1950 | Greenwich KC, CT | 182.00 | | | | | | | | | | | |
| Class score averages and placement totals: | | | | 180.67 | ERR | 0 | 0 | 0 | 0 | 0 | 0 | 0 | 0 | 0 | |
| Number of times qualifying and in each class: | | | | 3 | 0 | | | | | | | | | | f |
| Butch III of Glen Cove | | | | | | | | | | | | | | | |
| | | March 12, 1950 | Saw Mill River KC, NY | | 177.00 | | | | | | | | | | |
| Class score averages and placement totals: | | | | ERR | 177.00 | 0 | 0 | 0 | 0 | 0 | 0 | 0 | 0 | 0 | |
| Number of times qualifying and in each class: | | | | 0 | 1 | | | | | | | | | | |
| Delsa of Sunny Slopes | | | | | | | | | | | | | | | |
| | | October 15, 1950 | Del Monte KC, CA | 191.00 | | | 2 | | | | | | | | |
| | | November 05, 1950 | Sun Maid KC of Fresno, CA | 191.00 | | | | 3 | | | | | | | |
| | CD | November 12, 1950 | Eden KC, CA | 189.00 | | | | | | | | | | | |
| Class score averages and placement totals: | | | | 190.33 | ERR | 0 | 1 | 1 | 0 | 0 | 0 | 0 | 0 | 0 | |
| Number of times qualifying and in each class: | | | | 3 | 0 | | | | | | | | | | f |
| 1949-CH Lutz V Alpine Plateau | | | | | | | | | | | | | | | |
| | 1949-CH | June 04, 1950 | Pasadena KC, CA | 170.00 | | | | | | | | | | | |
| | 1949-CH | June 24, 1950 | Harbor Cities KC, CA | 171.00 | | | | | | | | | | | |
| Class score averages and placement totals: | | | | 170.50 | ERR | 0 | 0 | 0 | 0 | 0 | 0 | 0 | 0 | 0 | |
| Number of times qualifying and in each class: | | | | 2 | 0 | | | | | | | | | | m |
| 1951-CH Manitou Barry IX | | | | | | | | | | | | | | | |
| | 1951-CH | February 18, 1950 | 1st Co. Gov. Ft. Guard, CT | 192.00 | | | | | | | | | | | |
| | 1951-CH | April 09, 1950 | Providence County KC, RI | 186.00 | | | | | | | | | | | |
| | 1951-CH CD | May 14, 1950 | Windham County KC, CT | 188.00 | | | | | | | | | | | |
| Class score averages and placement totals: | | | | 188.67 | ERR | 0 | 0 | 0 | 0 | 0 | 0 | 0 | 0 | 0 | |
| Number of times qualifying and in each class: | | | | 3 | 0 | | | | | | | | | | m |
| Nana of Vernon | | | | | | | | | | | | | | | |
| | | October 29, 1950 | Cleveland All-Breed KC, OH | 187.00 | | | | | | | | | | | |
| | | December 09, 1950 | Philadelphia DTC, PA | 185.00 | | | | | | | | | | | |
| Class score averages and placement totals: | | | | 186.00 | ERR | 0 | 0 | 0 | 0 | 0 | 0 | 0 | 0 | 0 | |
| Number of times qualifying and in each class: | | | | 2 | 0 | | | | | | | | | | f |
| Parquins St. Nero | | | | | | | | | | | | | | | |
| | | May 07, 1950 | ODTC of Forestville, CT | 176.00 | | | | | | | | | | | |
| Class score averages and placement totals: | | | | 176.00 | ERR | 0 | 0 | 0 | 0 | 0 | 0 | 0 | 0 | 0 | |
| Number of times qualifying and in each class: | | | | 1 | 0 | | | | | | | | | | m |
| Prince Rasko of Lieu-Belle | | | | | | | | | | | | | | | |
| | | May 07, 1950 | Rhode Island KC, RI | 170.00 | | | | | | | | | | | |
| | | November 05, 1950 | OTC of Rhode Island, RI | 185.00 | | | | | | | | | | | |

| CH | AKC Performance Titles | Date | Trial | NA | NB | 1st | 2nd | 3rd | 4th | HIT | A | N | S | M | F |
|--|------------------------|-------------------|---------------------------------|---------------|---------------|----------|----------|----------|----------|----------|----------|----------|----------|----------|----------|
| CD | | December 02, 1950 | South Shore DTC, MA | 182.00 | | | | | | | | | | | |
| Class score averages and placement totals: | | | | 179.00 | ERR | 0 | 0 | 0 | 0 | 0 | 0 | 0 | 0 | 0 | |
| Number of times qualifying and in each class: | | | | 3 | 0 | | | | | | | | | | m |
| R Timber Ace | | | | | | | | | | | | | | | |
| | | January 15, 1950 | Wisconsin KC, WI | 192.00 | | | | | | | | | | | |
| | | January 29, 1950 | Northshore DTC, IL | 186.00 | | | | | | | | | | | |
| CD | | March 25, 1950 | International KC of Chicago, IL | 195.00 | | | | | | | | | | | |
| Class score averages and placement totals: | | | | 191.00 | ERR | 0 | 0 | 0 | 0 | 0 | 0 | 0 | 0 | 0 | |
| Number of times qualifying and in each class: | | | | 3 | 0 | | | | | | | | | | |
| Ratz V Alpine Plateau | | | | | | | | | | | | | | | |
| | | January 28, 1950 | Golden Gate KC, CA | 182.00 | | | | | | | | | | | |
| Class score averages and placement totals: | | | | 182.00 | ERR | 0 | 0 | 0 | 0 | 0 | 0 | 0 | 0 | 0 | |
| Number of times qualifying and in each class: | | | | 1 | 0 | | | | | | | | | | |
| 1953-CH Shadrack V Arnswalde | | | | | | | | | | | | | | | |
| 1953-CH | | May 20, 1950 | Beverly Riveria KC, CA | 183.00 | | | | | | | | | | | |
| 1953-CH | | June 04, 1950 | Pasadena KC, CA | 190.00 | | | | | | | | | | | |
| 1953-CH | CD | June 24, 1950 | Harbor Cities KC, CA | 193.00 | | | | | | | | | | | |
| Class score averages and placement totals: | | | | 188.67 | ERR | 0 | 0 | 0 | 0 | 0 | 0 | 0 | 0 | 0 | |
| Number of times qualifying and in each class: | | | | 3 | 0 | | | | | | | | | | m |
| Thor Duncan of Park Run | | | | | | | | | | | | | | | |
| | | June 04, 1950 | Stone City KC, IL | 170.00 | | | | | | | | | | | |
| | | June 18, 1950 | Skokie Valley KC, IL | 178.00 | | | | | | | | | | | |
| Class score averages and placement totals: | | | | 174.00 | ERR | 0 | 0 | 0 | 0 | 0 | 0 | 0 | 0 | 0 | |
| Number of times qualifying and in each class: | | | | 2 | 0 | | | | | | | | | | m |
| Overall class averages and placement totals: | | | | 183.62 | 177.00 | 0 | 1 | 1 | 0 | 0 | 0 | 0 | 0 | 0 | |
| Overall qualifying scores: | | | | 27 | 26 | 1 | | | | | | | | | |

Code A = All Breed Trial; N = SBC of America's Trial; S = Saint Bernard Independent Specialty

The HIT (High In Trial) total reflects ONLY the HITs from the Novice Classes.

The Dog may have earned other HITs from the Open or Utility not shown on the Novice Report

Obedience Scores changed to current system in 1948. Prior to 1948 the scoring system was different.

The Maximum Early Scores were: Novice 100 points, Open 250 points & Utility 400 points.

Early Titles required ONLY TWO qualifying scores.

Saint Bernard AKC Open {CDX} Obedience Scores For 1950

| CH | AKC Performance Titles | Date | Trial | OA | OB | 1st | 2nd | 3rd | 4th | UDX | HIT | A | N | S | M | E | |
|--|------------------------|-------------------|----------------------------|---------------|---------------|----------|-----|-----|-----|-----|-----|---|---|---|---|---|---|
| Nana | | | | | | | | | | | | | | | | | |
| | CD | March 18, 1950 | Manchester KC, NH | 188.00 | | | | | | | | | | | | | |
| | CD | June 04, 1950 | Farmingham District KC, MA | 173.00 | | | | | | | | | | | | | |
| | CDX | August 19, 1950 | North Shore KC, MA | 183.00 | | | | | | | | | | | | | |
| | CDX | December 02, 1950 | South Shore DTC, MA | | 176.00 | | | | | | | | | | | | |
| Class score averages and placement totals: | | | | 181.33 | 176.00 | 0 | 0 | 0 | 0 | 0 | 0 | 0 | 0 | 0 | | | |
| Number of times qualifying and in each class: | | | | 4 | 3 | 1 | | | | | | | | | | | f |
| Overall class averages and placement totals: | | | | 181.33 | 176.00 | 0 | 0 | 0 | 0 | 0 | 0 | 0 | 0 | 0 | | | |
| Overall qualifying scores: | | | | 4 | 3 | 1 | | | | | | | | | | | |

Code A = All Breed Trial; N = SBC of America's Trial; S = Saint Bernard Independent Specialty

The HIT (High In Trial) total reflects ONLY the HITs from the Open Classes.

The Dog may have earned other HITs from the Novice or Utility Classes not shown on the Open Report

Obedience Scores changed to current system in 1948. Prior to 1948 the scoring system was different.

The Maximum Early Scores were: Novice 100 points, Open 250 points & Utility 400 points.

Early Titles required ONLY TWO qualifying scores.

© This Article is Copyrighted by John Cox
The Saint Bernard National Archives

Saint Bernard AKC Advanced Scores {Open/Utility} For 1950

| CH | AKC Performance Titles | Date | Trial | OA | OB | UA | UB | UDX | HIT | A | N | S | # | M | F |
|---|------------------------|-------------------|----------------------------|---------------|---------------|------------|------------|------------|----------|----------|----------|----------|----------|---|----------|
| Nana | | | | | | | | | | | | | | | |
| CD | | March 18, 1950 | Manchester KC, NH | 188.00 | | | | | | | | | 1 | | |
| CD | | June 04, 1950 | Farmingham District KC, MA | 173.00 | | | | | | | | | 2 | | |
| CDX | | August 19, 1950 | North Shore KC, MA | 183.00 | | | | | | | | | 3 | | |
| CDX | | December 02, 1950 | South Shore DTC, MA | | 176.00 | | | | | | | | 4 | | |
| Class score averages and placement totals: | | | | 181.33 | 176.00 | ERR | ERR | ERR | 0 | 0 | 0 | 0 | 4 | | |
| Number of times qualifying in each class: | | | | 4 | 3 | 1 | 0 | 0 | | | | | | | f |
| Overall class score averages and placement totals: | | | | 181.33 | 176.00 | ERR | ERR | | 0 | 0 | 0 | 0 | 4 | | |
| Overall number of times qualifying in each class: | | | | 4 | 3 | 1 | 0 | 0 | | | | | | | |

= Number of Qualifying Scores in the Classes of Open and/or Utility

***Code* A = All Breed Trial; N = SBC of America's Trial; S = Saint Bernard Independent Specialty**

The HIT (High In Trial) total reflects ONLY the HITs from the Open and/or Utility Classes.

The Dog may have earned other HITs from the Novice Classes not shown on the Advanced Scores Report

Obedience Scores changed to current system in 1948. Prior to 1948 the scoring system was different.

The Maximum Early Scores were: Novice 100 points, Open 250 points & Utility 400 points.

Early Titles required ONLY TWO qualifying scores.

© This Article is Copyrighted by John Cox
The Saint Bernard National Archives