

*Saint Bernard National Archives*

*&  
Hall of Fame*

*Year*

**1959**

# **Welcome To Our Historical Records**

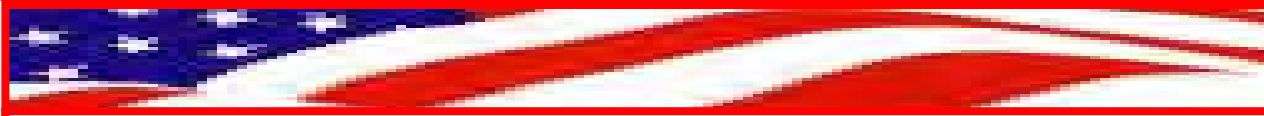
**This portfolio works as a time capsule  
taken from the cornerstone of the  
Saint Bernard National Archives**

**Open it to view the American Kennel Club's breed  
records on the Saint Bernard for the year above.**

**Sires – Dams – Specialty Wins – Show & Group Wins  
Performance Events – Titles and Dates of Titles  
Hall of Fame Inductees and Plateaus of Excellence**



John Cox, Archivist



## The Saint Bernard Club of America's 1959 National Specialty Winners

*Date: September 6, 1959*

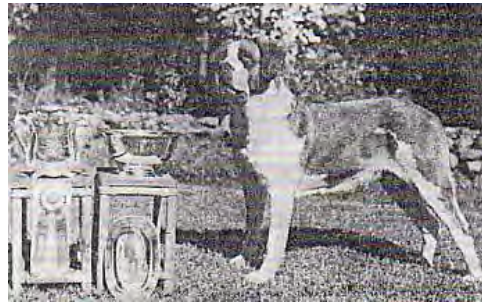
*Location: Purchase, NY*

*Judge: A. B. Moulton*

*Dogs In Competition: 24*



**BOB:** CH Lord Von Sauliamt



**BOS:** CH Qutte Of Sunny Slopes CD



**WD/BOW:** Lord Von Sauliamt



**WB:** Lady Charmagne V Chriss

# *Saint Bernard National Archives*

## *Hall of Fame*

© John Cox

### **1959 Year End Statistics**

**34 Saint Bernards Earned 35 AKC Titles**

**1 Saint Bernard Earned More Than One AKC Title**

**25 Champions of Record**

**10 OBEDIENCE TITLES:**

10 Companion Dog  
0 Companion Dog Excellent  
0 Utility Dog  
0 Tracking Dog

1936 First Year of Title  
1936 First Year of Title  
1936 First Year of Title  
1936 First Year of Title

**Stud Dog For The Year - Producing 2 Champion Get:**

**CH Banz V Bachingerhof**  
Deepthoughts Ace  
**CH Harveys Zwingo Barri V Banz**

**Brood Bitch For The Year - Producing 2 Champion Get:**

**CH Siegand Wonna Joggi V Elba**

**3 GROUP FIRST PLACEMENTS:**

**CH Harveys Zwingo Barri V Banz**

1924 First Year of Award

**2 BEST IN SHOW AT ALL-BREED SHOWS:**

**CH Harveys Zwingo Barri V Banz**

1924 First Year of Award

# Saint Bernard Hall of Fame Inductees For 1959

| Criteria Induction Category | YR   | CH | Name                     | AKC Performance Titles | M/F | Owner          |
|-----------------------------|------|----|--------------------------|------------------------|-----|----------------|
| Champions 3 + CDX 1         | 1959 |    | Wanrooys Berna           |                        | f   | ?              |
| 1                           |      |    |                          |                        |     |                |
| Champions 4                 | 1959 | CH | Minka V Immenberg        |                        | f   | Lloyd, Shirley |
| 1                           |      |    |                          |                        |     |                |
| Champions 5                 | 1959 | CH | Quester V Alpine Plateau |                        | m   | ?              |
| 1                           |      |    |                          |                        |     |                |
| <b>Totals:</b>              |      |    | <b>3</b>                 |                        |     |                |

© This Article is Copyrighted by John Cox  
The Saint Bernard National Archives

# Saint Bernard AKC Championship Titles For 1959

| <u>CH Title Date</u> | <u>CH</u> | <u>Name</u>                    | <u>Performance Title Year</u> | <u>M</u> | <u>F</u> |
|----------------------|-----------|--------------------------------|-------------------------------|----------|----------|
|                      | 1959-CH   | Barkdolls Hi Jinks Kris V Gero |                               |          | f        |
|                      | 1959-CH   | Bonnie of Little Farm          |                               |          | f        |
|                      | 1959-CH   | Caesar of Coca Hill            |                               | m        |          |
|                      | 1959-CH   | Christcon Temple Brono         |                               | m        |          |
|                      | 1959-CH   | Dean of Highmont               |                               | m        |          |
|                      | 1959-CH   | Dolomounts Phoebe              |                               |          | f        |
|                      | 1959-CH   | Edbar Dakota Bell              |                               |          | f        |
|                      | 1959-CH   | Hans Von Morneburg             | 1961                          | m        |          |
|                      | 1959-CH   | Lord V Sauliamt                |                               | m        |          |
|                      | 1959-CH   | Ma-Bobs Miss Sheba             |                               |          | f        |
|                      | 1959-CH   | Morgans Basil Von Hans         |                               | m        |          |
|                      | 1959-CH   | Mr. Bimbo Bones                |                               | m        |          |
|                      | 1959-CH   | Parline Corby                  |                               | m        |          |
|                      | 1959-CH   | Powells Rolf of Riga           |                               | m        |          |
|                      | 1959-CH   | Prince Rasko                   |                               | m        |          |
|                      | 1959-CH   | Sanctuary Woods Better Times   |                               | m        |          |
|                      | 1959-CH   | Sanctuary Woods Devotion       |                               |          | f        |
|                      | 1959-CH   | Sanctuary Woods Gadabout       | 1959,1960                     | m        |          |
|                      | 1959-CH   | Sanctuary Woods Gulliver       |                               | m        |          |
|                      | 1959-CH   | Sanctuary Woods Rag Doll       |                               |          | f        |
|                      | 1959-CH   | Sanctuary Woods Zoro           |                               | m        |          |
|                      | 1959-CH   | Sevargs Babbi V Questor        |                               | m        |          |
|                      | 1959-CH   | Siegend Wonnas Juni V Duke     |                               |          | f        |
|                      | 1959-CH   | Zwinghof Friedas Valery        |                               |          | f        |
|                      | 1959-CH   | Zwinghof Xesbo V Gero Wanna    |                               | m        |          |

|                |           |          |    |   |
|----------------|-----------|----------|----|---|
| <b>Totals:</b> | <b>25</b> | <b>2</b> | 16 | 9 |
|----------------|-----------|----------|----|---|

Due to the high number of Performance titles they are listed in two (2) Performance Databases - Sorted by Dog or Title  
 AKC Performance titles started with Obedience back in 1936.

© This Article is Copyrighted by John Cox  
 The Saint Bernard National Archives

# Saint Bernard AKC Performance Titles For 1959

| CH                      | Name                        | Titles    | Date              | M        | F        |
|-------------------------|-----------------------------|-----------|-------------------|----------|----------|
| <b>CD</b>               |                             |           |                   |          |          |
| <b>1959</b>             |                             |           |                   |          |          |
| <b>1960-CH</b>          | Alaric Abbott Von Grand     | CD        | May 24, 1959      | m        |          |
| <b>1960-CH</b>          | Alaska Ann Von Grand        | CD        | February 15, 1959 |          | f        |
|                         | Frankos Debra               | CD        | March 08, 1959    |          | f        |
| <b>1960-CH</b>          | Knabllaws Echo Von Barre    | CD        | November 29, 1959 | m        |          |
| <b>1958-CH</b>          | Little Farms Sir Windy      | CD        | January 10, 1959  | m        |          |
|                         | Lord Goliath of Balmville   | CD        | October 18, 1959  | m        |          |
|                         | Ludwigs Heidi               | CD        | January 31, 1959  |          | f        |
| <b>1960-CH</b>          | Sanctuary Woods Bold Leader | CD        | October 04, 1959  | m        |          |
| <b>1959-CH</b>          | Sanctuary Woods Gadabout    | CD        | April 12, 1959    | m        |          |
|                         | Weavers Christy Cepheus     | CD        | April 19, 1959    |          |          |
| <b>6</b>                | <b>10</b>                   | <b>10</b> |                   | <b>6</b> | <b>3</b> |
| <b>Overall Summary:</b> |                             |           |                   |          |          |
| <b>6</b>                | <b>10</b>                   | <b>10</b> |                   | <b>6</b> | <b>3</b> |

Due to the high number of Performance titles they are listed in two (2) Performance Databases - Sorted by Dog or Title  
 AKC Performance titles started with Obedience back in 1936.

© This Article is Copyrighted by John Cox  
 The Saint Bernard National Archives

# Saint Bernard Sires of AKC Titled Get For 1959

| CH | Sire                         | CH | Dam                           | CH      | Get                            | Performance Title Year | M | F |
|----|------------------------------|----|-------------------------------|---------|--------------------------------|------------------------|---|---|
|    | Alex V D Kaserwacht          |    | Alma V Dornegguch             | 1959-CH | Lord V Sauliamt                |                        | m |   |
| CH | Andy Boy De Line Farm        |    | Dolomounts Wonder Girl        | 1959-CH | Mr. Bimbo Bones                |                        | m |   |
| CH | Banz V Bachingerhof          |    | Quinta of Sunny Slopes        | 1960-CH | Sanctuary Woods Bold Leader    | 1959                   | m |   |
| CH | Banz V Bachingerhof          |    | Quinta of Sunny Slopes        | 1959-CH | Sanctuary Woods Better Times   |                        | m |   |
| CH | Banz V Bachingerhof          |    | Sanctuary Woods Brown Sugar   | 1959-CH | Sanctuary Woods Rag Doll       |                        |   | f |
| CH | Barre V Stanislaus           | CH | Sevargs Berni V Questor       | 1960-CH | Knabllaws Echo Von Barre       | 1959                   | m |   |
| CH | Bryjons Damocles V Kris      |    | Katrin V Gerd of Johnnycake   | 1959-CH | Ma-Bobs Miss Sheba             |                        |   | f |
| CH | Chime Hill Frederick V Gerd  | CH | Lady Agnes of Agony Acres     | 1959-CH | Caesar of Coca Hill            |                        | m |   |
|    | Count of Matahorn            |    | Dawrob Countess of Armar      | 1959-CH | Hans Von Morneburg             | 1961                   | m |   |
|    | Deephoughts Ace              | CH | Sanctuary Woods Rag Doll      | 1959-CH | Sanctuary Woods Devotion       |                        |   | f |
|    | Deephoughts Ace              | CH | Sanctuary Woods Sincerity     | 1959-CH | Sanctuary Woods Gulliver       |                        | m |   |
| CH | Duke of Little Farm          |    | Wanrooys Berna                | 1958-CH | Little Farms Sir Windy         | 1959                   | m |   |
| CH | Duke of Little Farm          |    | Wanrooys Berna                | 1959-CH | Bonnie of Little Farm          |                        |   | f |
|    | Edelweiss Encoh              |    | Benyas Heidi                  | 1959-CH | Prince Rasko                   |                        | m |   |
|    | Gero Oenz V Bomar            |    | Liebe Heidi V Schwarzwald Hof | 1959-CH | Edbar Dakota Bell              |                        |   | f |
| CH | Grosse Ile Captain Jinks     |    | Starks Parline Jeannie        | 1959-CH | Parline Corby                  |                        | m |   |
|    | Hans Jungfrau Von Gerd       |    | Jo Teena of Brownhelm         | 1959-CH | Morgans Basil Von Hans         |                        | m |   |
|    | Hans of Riga                 |    | Heilmans Nora V Bornfeld      | 1959-CH | Powells Rolf of Riga           |                        | m |   |
| CH | Harveys Zwingo Barri V Banz  |    | Frieda of Al-Ver-Don          | 1959-CH | Zwinghof Friedas Valery        |                        |   | f |
| CH | Harveys Zwingo Barri V Banz  | CH | Siegend Wonna Joggi Elba      | 1959-CH | Zwinghof Xesbo V Gero Wanna    |                        | m |   |
| CH | Heilmans Kris V Gero         |    | Lady Rhoda                    | 1959-CH | Barkdolls Hi Jinks Kris V Gero |                        |   | f |
|    | King Alaric                  |    | Duchess of Tulley             |         | Ludwigs Heidi                  | 1959                   |   | f |
| CH | Lester V Rask                |    | Bo Peep of Dolomount          | 1959-CH | Dolomounts Phoebe              |                        |   | f |
| CH | Major V Neu Habsburg         | CH | Minka V Immenberg             | 1959-CH | Dean of Highmont               |                        | m |   |
| CH | Questor V Alpine Plateau     |    | Janday Penny Ante             | 1959-CH | Sevargs Babbi V Questor        |                        | m |   |
|    | Sanctuary Woods Credo Again  |    | Sanctuary Woods Kande V Sugar | 1959-CH | Sanctuary Woods Gadabout       | 1959,1960              | m |   |
| CH | Sanctuary Woods Orofino      |    | Citta V Schneitenberg         | 1959-CH | Sanctuary Woods Zoro           |                        | m |   |
|    | Sanctuary Woods Twenty Grand |    | Sanctuary Woods Zohra         | 1960-CH | Alaric Abbott Von Grand        | 1959                   | m |   |
|    | Sanctuary Woods Twenty Grand |    | Sanctuary Woods Zohra         | 1960-CH | Alaska Ann Von Grand           | 1959                   |   | f |
| CH | Siegend Sir Duke Von Grand   | CH | Siegend Wonna Joggi Elba      | 1959-CH | Siegend Wonnas Juni V Duke     |                        |   | f |
|    | Solomon                      |    | Deborah                       |         | Lord Goliath of Balmville      | 1959                   | m |   |
|    | St. Olam Mischa              |    | Celeste Glebefield            | 1959-CH | Christcon Temple Brono         |                        | m |   |
|    |                              |    |                               |         | Frankos Debra                  | 1959                   |   | f |
|    |                              |    |                               |         | Weavers Christy Cepheus        | 1959                   |   |   |

|                |           |           |           |       |
|----------------|-----------|-----------|-----------|-------|
| <b>Totals:</b> | <b>30</b> | <b>34</b> | <b>11</b> | 21 12 |
|----------------|-----------|-----------|-----------|-------|

Due to the high number of Performance titles they are listed in two (2) Performance Databases - Sorted by Dog or Title  
 AKC Performance titles started with Obedience back in 1936.

© This Article is Copyrighted by John Cox  
 The Saint Bernard National Archives

# Saint Bernard Dams of AKC Titled Get For 1959

| CH | Dam                           | CH | Sire                         | CH      | Get                            | Performance Title Year | M | F |
|----|-------------------------------|----|------------------------------|---------|--------------------------------|------------------------|---|---|
|    | Alma V Dornegguch             |    | Alex V D Kaserwacht          | 1959-CH | Lord V Sauliamt                |                        | m |   |
|    | Benyas Heidi                  |    | Edelweiss Encoh              | 1959-CH | Prince Rasko                   |                        | m |   |
|    | Bo Peep of Dolomount          | CH | Lester V Rask                | 1959-CH | Dolomounts Phoebe              |                        |   | f |
|    | Celeste Glebefield            |    | St. Olam Mischa              | 1959-CH | Christcon Temple Brono         |                        | m |   |
|    | Citta V Schneitenberg         | CH | Sanctuary Woods Orofino      | 1959-CH | Sanctuary Woods Zoro           |                        | m |   |
|    | Dawrob Countess of Armar      |    | Count of Matahorn            | 1959-CH | Hans Von Morneburg             | 1961                   | m |   |
|    | Deborah                       |    | Solomon                      |         | Lord Goliath of Balmville      | 1959                   | m |   |
|    | Dolomounts Wonder Girl        | CH | Andy Boy De Line Farm        | 1959-CH | Mr. Bimbo Bones                |                        | m |   |
|    | Duchess of Tulley             |    | King Alaric                  |         | Ludwigs Heidi                  | 1959                   |   | f |
|    | Frieda of Al-Ver-Don          | CH | Harveys Zwingo Barri V Banz  | 1959-CH | Zwinghof Friedas Valery        |                        |   | f |
|    | Heilmans Nora V Bornfeld      |    | Hans of Riga                 | 1959-CH | Powells Rolf of Riga           |                        | m |   |
|    | Janday Penny Ante             | CH | Questor V Alpine Plateau     | 1959-CH | Sevargs Babbi V Questor        |                        | m |   |
|    | Jo Teena of Brownhelm         |    | Hans Jungfrau Von Gerd       | 1959-CH | Morgans Basil Von Hans         |                        | m |   |
|    | Katrin V Gerd of Johnnycake   | CH | Bryjons Damocles V Kris      | 1959-CH | Ma-Bobs Miss Sheba             |                        |   | f |
| CH | Lady Agnes of Agony Acres     | CH | Chime Hill Frederick V Gerd  | 1959-CH | Caesar of Coca Hill            |                        | m |   |
|    | Lady Rhoda                    | CH | Heilmans Kris V Gero         | 1959-CH | Barkdolls Hi Jinks Kris V Gero |                        |   | f |
|    | Liebe Heidi V Schwarzwald Hof |    | Gero Oenz V Bomar            | 1959-CH | Edbar Dakota Bell              |                        |   | f |
| CH | Minka V Immenberg             | CH | Major V Neu Habsburg         | 1959-CH | Dean of Highmont               |                        | m |   |
|    | Quinta of Sunny Slopes        | CH | Banz V Bachingerhof          | 1959-CH | Sanctuary Woods Better Times   |                        | m |   |
|    | Quinta of Sunny Slopes        | CH | Banz V Bachingerhof          | 1960-CH | Sanctuary Woods Bold Leader    | 1959                   | m |   |
|    | Sanctuary Woods Brown Sugar   | CH | Banz V Bachingerhof          | 1959-CH | Sanctuary Woods Rag Doll       |                        |   | f |
|    | Sanctuary Woods Kande V Sugar |    | Sanctuary Woods Credo Again  | 1959-CH | Sanctuary Woods Gadabout       | 1959,1960              | m |   |
| CH | Sanctuary Woods Rag Doll      |    | Deephoughts Ace              | 1959-CH | Sanctuary Woods Devotion       |                        |   | f |
| CH | Sanctuary Woods Sincerity     |    | Deephoughts Ace              | 1959-CH | Sanctuary Woods Gulliver       |                        | m |   |
|    | Sanctuary Woods Zohra         |    | Sanctuary Woods Twenty Grand | 1960-CH | Alaric Abbott Von Grand        | 1959                   | m |   |
|    | Sanctuary Woods Zohra         |    | Sanctuary Woods Twenty Grand | 1960-CH | Alaska Ann Von Grand           | 1959                   |   | f |
| CH | Sevargs Berni V Questor       | CH | Barre V Stanislaus           | 1960-CH | Knabblaws Echo Von Barre       | 1959                   | m |   |
| CH | Siegend Wonna Joggi Elba      | CH | Harveys Zwingo Barri V Banz  | 1959-CH | Zwinghof Xesbo V Gero Wanna    |                        | m |   |
| CH | Siegend Wonna Joggi Elba      | CH | Siegend Sir Duke Von Grand   | 1959-CH | Siegend Wonnas Juni V Duke     |                        |   | f |
|    | Starks Parline Jeannie        | CH | Grosse Ile Captain Jinks     | 1959-CH | Parline Corby                  |                        | m |   |
|    | Wanrooys Berna                | CH | Duke of Little Farm          | 1959-CH | Bonnie of Little Farm          |                        |   | f |
|    | Wanrooys Berna                | CH | Duke of Little Farm          | 1958-CH | Little Farms Sir Windy         | 1959                   | m |   |
|    |                               |    |                              |         | Frankos Debra                  | 1959                   |   | f |
|    |                               |    |                              |         | Weavers Christy Cepheus        | 1959                   |   |   |

|                |           |           |           |       |
|----------------|-----------|-----------|-----------|-------|
| <b>Totals:</b> | <b>30</b> | <b>34</b> | <b>11</b> | 21 12 |
|----------------|-----------|-----------|-----------|-------|

Due to the high number of Performance titles they are listed in two (2) Performance Databases - Sorted by Dog or Title  
 AKC Performance titles started with Obedience back in 1936.

© This Article is Copyrighted by John Cox  
 The Saint Bernard National Archives



# Saint Bernard AKC Best In Show Wins For 1959

| <u>CH</u>            | <u>Name</u>                   | <u>AKC Performance Titles</u> | <u>Date</u>   | <u>Show</u>      | <u># of P.</u> | <u>BIS</u> | <u># BIS</u> | <u>Comp.</u> | <u>M</u> | <u>F</u> |
|----------------------|-------------------------------|-------------------------------|---------------|------------------|----------------|------------|--------------|--------------|----------|----------|
|                      | CHHarveys Zwingo Barri V Banz |                               | June 06, 1959 | Kalamazoo KC, MI | 5              | BIS        | 1            | 591          |          |          |
| <b>Dog's Totals:</b> |                               |                               |               |                  |                |            | 1            |              | 591      |          |
| <b>Totals:</b>       |                               |                               |               |                  |                |            | 1            |              |          |          |

m

**# of P. = Number of placements in Group at the time of the BIS win**  
**Comp. = Number of dogs in competition at the show**

© This Article is Copyrighted by John Cox  
 The Saint Bernard National Archives

# Saint Bernard AKC Group Placements For 1959

| CH                                       | Name | AKC Titles | M | F | Date               | Show                            | 1 | 2 | 3 | 4 | # of P. | BIS | # BIS | Comp. |
|--|------|------------|---|---|--------------------|---------------------------------|---|---|---|---|---------|-----|-------|-------|
| <b>CH Arora Duke of Mischief</b>         |      |            |   | m | June 14, 1959      | Alaska KC, AK                   |   |   |   | 4 | 2       |     |       |       |
| Dog's Totals:                            |      |            |   |   |                    |                                 | 1 | 0 | 0 | 0 | 1       | 1   | 0     | 0     |
| <b>CH Barkdolls Hi Jinks Kris V Gero</b> |      |            |   | m | April 26, 1959     | Sheboygan KC, WI                |   |   |   | 4 | 1       |     |       |       |
| Dog's Totals:                            |      |            |   |   |                    |                                 | 1 | 0 | 0 | 0 | 1       | 1   | 0     | 0     |
| <b>Baron V Reilavak</b>                  |      |            |   | m | May 05, 1959       | Electric City KC, MT            |   | 2 |   |   | 1       |     |       |       |
| Dog's Totals:                            |      |            |   |   |                    |                                 | 1 | 0 | 1 | 0 | 0       | 1   | 0     | 0     |
| <b>CH Barre V Stanislaus</b>             |      |            |   | m | February 28, 1959  | Oakland KC, CA                  |   |   |   | 4 | 1       |     |       |       |
| <b>CH Barre V Stanislaus</b>             |      |            |   | m | October 25, 1959   | Sacramento KC, CA               |   |   |   | 4 | 2       |     |       |       |
| Dog's Totals:                            |      |            |   |   |                    |                                 | 2 | 0 | 0 | 0 | 2       | 2   | 0     | 0     |
| <b>CH Bonnie of Little Farm</b>          |      |            |   | f | March 15, 1959     | Genesee County KC, MI           |   |   |   | 4 | 1       |     |       |       |
| Dog's Totals:                            |      |            |   |   |                    |                                 | 1 | 0 | 0 | 0 | 1       | 1   | 0     | 0     |
| <b>CH Bryjons Damocles V Kris</b>        |      |            |   | m | February 01, 1959  | Muncie KC, IN                   |   |   | 3 |   | 37      |     |       |       |
| <b>CH Bryjons Damocles V Kris</b>        |      |            |   | m | August 23, 1959    | Chagrin Valley KC, OH           | 1 |   |   |   | 38      |     |       |       |
| <b>CH Bryjons Damocles V Kris</b>        |      |            |   | m | September 20, 1959 | Trumbull County KC, OH          |   |   |   | 4 | 39      |     |       |       |
| <b>CH Bryjons Damocles V Kris</b>        |      |            |   | m | September 27, 1959 | Terre Haute Izaak Walton KC, IN |   |   | 3 |   | 40      |     |       |       |
| <b>CH Bryjons Damocles V Kris</b>        |      |            |   | m | November 29, 1959  | Dan Emmett KC, OH               |   |   |   | 4 | 41      |     |       |       |
| <b>CH Bryjons Damocles V Kris</b>        |      |            |   | m | December 12, 1959  | Grand Rapids KC, MI             | 1 |   |   |   | 42      |     |       |       |
| Dog's Totals:                            |      |            |   |   |                    |                                 | 6 | 2 | 0 | 2 | 2       | 6   | 0     | 0     |
| <b>CH Caesar of Coca Hill</b>            |      |            |   | m | November 07, 1959  | Monroe KC, MI                   |   |   | 3 |   | 1       |     |       |       |
| Dog's Totals:                            |      |            |   |   |                    |                                 | 1 | 0 | 0 | 1 | 0       | 1   | 0     | 0     |
| <b>Caimbridge Pete of Whit Hal</b>       |      |            |   | m | May 09, 1959       | Springfield KC, MA              |   |   | 3 |   | 1       |     |       |       |
| Dog's Totals:                            |      |            |   |   |                    |                                 | 1 | 0 | 0 | 1 | 0       | 1   | 0     | 0     |
| <b>Der Travrige Hund</b>                 |      |            |   | m | May 28, 1959       | Idaho Capitol City KC, ID       |   | 2 |   |   | 1       |     |       |       |
| Dog's Totals:                            |      |            |   |   |                    |                                 | 1 | 0 | 1 | 0 | 0       | 1   | 0     | 0     |
| <b>CH Harveys Zwingo Barri V Banz</b>    |      |            |   | m | May 03, 1959       | Northeastern Indiana KC, IN     | 1 |   |   |   | 4       |     |       |       |
| <b>CH Harveys Zwingo Barri V Banz</b>    |      |            |   | m | June 06, 1959      | Kalamazoo KC, MI                | 1 |   |   |   | 5       | BIS | 1     | 591   |
| <b>CH Harveys Zwingo Barri V Banz</b>    |      |            |   | m | June 28, 1959      | Badger KC, WI                   |   |   | 3 |   | 6       |     |       |       |
| <b>CH Harveys Zwingo Barri V Banz</b>    |      |            |   | m | October 11, 1959   | Skokie Valley KC, IL            | 1 |   |   |   | 7       |     |       |       |
| <b>CH Harveys Zwingo Barri V Banz</b>    |      |            |   | m | October 18, 1959   | Kokomo KC, IN                   |   |   |   | 4 | 8       |     |       |       |

| CH                           | Name                                   | AKC Titles | M | F        | Date              | Show                    | 1        | 2        | 3         | 4         | # of P. BIS | # BIS Comp. |
|------------------------------|--|------------|---|----------|-------------------|-------------------------|----------|----------|-----------|-----------|-------------|-------------|
|                              |  |            |   |          | December 06, 1959 | Ingham County KC, MI    |          |          | 3         |           | 9           |             |
|                              |  |            |   |          | December 12, 1959 | Berrien KC, MI          |          |          |           | 4         | 10          |             |
| <b>Dog's Totals:</b>         |  |            |   |          |                   | <b>7</b>                | <b>3</b> | <b>0</b> | <b>2</b>  | <b>2</b>  | <b>7</b>    | <b>1</b>    |
|                              | <b>CH Ma-Bobs Mighty Moe V Zwingo</b>  |            |   | <b>m</b> |                   |                         |          |          |           |           |             | <b>591</b>  |
|                              |  |            |   |          | March 29, 1959    | Western Reserve KC, OH  |          | 2        |           |           | 1           |             |
|                              |  |            |   |          | July 12, 1959     | Grand River KC, OH      |          |          |           | 4         | 2           |             |
| <b>Dog's Totals:</b>         |  |            |   |          |                   | <b>2</b>                | <b>0</b> | <b>1</b> | <b>0</b>  | <b>1</b>  | <b>2</b>    | <b>0</b>    |
|                              | <b>CH Morgans Basil V Hans</b>         |            |   | <b>m</b> |                   |                         |          |          |           |           |             | <b>0</b>    |
|                              |  |            |   |          | February 01, 1959 | McKinley KC, OH         | 1        |          |           |           | 1           |             |
|                              |  |            |   |          | April 16, 1959    | Erie KC, PA             |          | 2        |           |           | 2           |             |
|                              |  |            |   |          | June 27, 1959     | Mountaineer KC, WV      |          |          | 3         |           | 3           |             |
|                              |  |            |   |          | June 28, 1959     | Blennerhassett KC, WV   |          |          | 3         |           | 4           |             |
| <b>Dog's Totals:</b>         |  |            |   |          |                   | <b>4</b>                | <b>1</b> | <b>1</b> | <b>2</b>  | <b>0</b>  | <b>4</b>    | <b>0</b>    |
|                              | <b>CH Powells Little John</b>          |            |   | <b>m</b> |                   |                         |          |          |           |           |             | <b>0</b>    |
|                              |  |            |   |          | January 10, 1959  | Berrien KC, MI          | 1        |          |           |           | 7           |             |
|                              |  |            |   |          | February 08, 1959 | McComb County KC, MI    |          |          | 3         |           | 8           |             |
|                              |  |            |   |          | March 08, 1959    | Mad River Valley KC, OH | 1        |          |           |           | 9           |             |
|                              |  |            |   |          | May 10, 1959      | Lima KC, OH             |          |          |           | 4         | 10          |             |
| <b>Dog's Totals:</b>         |  |            |   |          |                   | <b>4</b>                | <b>2</b> | <b>0</b> | <b>1</b>  | <b>1</b>  | <b>4</b>    | <b>0</b>    |
|                              | <b>CH Roma V Hanialthaus</b>           |            |   | <b>f</b> |                   |                         |          |          |           |           |             | <b>0</b>    |
|                              |  |            |   |          | July 19, 1959     | Coulee KC, WI           |          | 2        |           |           | 1           |             |
| <b>Dog's Totals:</b>         |  |            |   |          |                   | <b>1</b>                | <b>0</b> | <b>1</b> | <b>0</b>  | <b>0</b>  | <b>1</b>    | <b>0</b>    |
|                              | <b>CH Sanctuary Woods Better Times</b> |            |   | <b>m</b> |                   |                         |          |          |           |           |             | <b>0</b>    |
|                              |  |            |   |          | January 25, 1959  | Vancouver KC, WA        |          | 2        |           |           | 2           |             |
|                              |  |            |   |          | February 08, 1959 | Umpqua KC, OR           |          |          |           | 4         | 3           |             |
|                              |  |            |   |          | October 24, 1959  | Twin Cities KC, CA      |          |          | 3         |           | 4           |             |
| <b>Dog's Totals:</b>         |  |            |   |          |                   | <b>3</b>                | <b>0</b> | <b>1</b> | <b>1</b>  | <b>1</b>  | <b>3</b>    | <b>0</b>    |
|                              | <b>CH Sanctuary Woods Double Dare</b>  |            |   | <b>m</b> |                   |                         |          |          |           |           |             | <b>0</b>    |
|                              |  |            |   |          | December 06, 1959 | Yuma KC, AZ             |          |          |           | 4         | 1           |             |
| <b>Dog's Totals:</b>         |  |            |   |          |                   | <b>1</b>                | <b>0</b> | <b>0</b> | <b>0</b>  | <b>1</b>  | <b>1</b>    | <b>0</b>    |
|                              | <b>CH Sanctuary Woods Gulliver</b>     |            |   | <b>m</b> |                   |                         |          |          |           |           |             | <b>0</b>    |
|                              |  |            |   |          | July 11, 1959     | Lions KC, OR            | 1        |          |           |           | 2           |             |
| <b>Dog's Totals:</b>         |  |            |   |          |                   | <b>1</b>                | <b>1</b> | <b>0</b> | <b>0</b>  | <b>0</b>  | <b>1</b>    | <b>0</b>    |
|                              | <b>CH Windmills Judi II</b>            |            |   | <b>f</b> |                   |                         |          |          |           |           |             | <b>0</b>    |
|                              |  |            |   |          | August 02, 1959   | Niagara Falls KC, NY    |          |          |           | 4         | 1           |             |
| <b>Dog's Totals:</b>         |  |            |   |          |                   | <b>1</b>                | <b>0</b> | <b>0</b> | <b>0</b>  | <b>1</b>  | <b>1</b>    | <b>0</b>    |
|                              | <b>CH Zsep Jovo of Pal Mal</b>         |            |   | <b>m</b> |                   |                         |          |          |           |           |             | <b>0</b>    |
|                              |  |            |   |          | April 26, 1959    | Glendale KC, CA         |          |          |           | 4         | 1           |             |
| <b>Dog's Totals:</b>         |  |            |   |          |                   | <b>1</b>                | <b>0</b> | <b>0</b> | <b>0</b>  | <b>1</b>  | <b>1</b>    | <b>0</b>    |
| <b>Overall Group Totals:</b> |  |            |   |          |                   | <b>40</b>               | <b>9</b> | <b>6</b> | <b>10</b> | <b>15</b> | <b>1</b>    | <b>0</b>    |

# Saint Bernard Specialty Show Wins For 1959

| CH   | Name                   | ME | AKC Titles | Date               | Show                   | BOB | BOS | W | COMP. | HIT | I |
|--|------------------------|----|------------|--------------------|------------------------|-----|-----|---|-------|-----|---|
| <b>Independent Specialty Shows, Trials &amp; Tests</b> |                        |    |            |                    |                        |     |     |   |       |     |   |
| CH   | Lord V Sauliamt        |    | m          | September 06, 1959 | SBC of America # 22 NY | BOB |     | 1 | 24    |     |   |
| Dog's totals:  |                        |    |            |                    |                        | 1   | 0   | 1 | 24    | 0   | 0 |
| CH   | Quette of Sunny Slopes |    | f          | September 06, 1959 | SBC of America # 22 NY |     | BOS | 1 | 24    |     |   |
| Dog's totals:  |                        |    |            |                    |                        | 0   | 1   | 1 | 24    | 0   | 0 |
| <b>Overall totals:</b>                                 |                        |    |            |                    |                        | 1   | 1   |   |       | 0   |   |

BOS was first awarded in 1942  
 There were NO National Specialties in 1944, 1945, 1947 & 1962  
 W = Number of BOB/BOS win at independent specialty shows  
 Comp. = Number of dogs in competition at the show  
 T = Number of HIT win at independent specialty trials  
 \* = AKC Rescinded award

© This Article is Copyrighted by John Cox  
 The Saint Bernard National Archives

# Saint Bernard AKC Regular Obedience Trials For 1959

\*\*\* Go to the Saint Bernard National Archive's database page to view a dog's titles and dates earned \*\*\*

| CH   | Dog & Class | Date              | Trial                          | NA            | NB            | OA            | OB         | UA         | UB         | 1st      | 2nd      | 3rd      | 4th      | UDX      | HIT      | M        | F        |
|--|-------------|-------------------|--------------------------------|---------------|---------------|---------------|------------|------------|------------|----------|----------|----------|----------|----------|----------|----------|----------|
| <b>CHAlaric Abbott Von Grand</b>                     |             |                   |                                |               |               |               |            |            |            |          |          |          |          |          |          |          |          |
| <i>Novice</i>  |             |                   |                                |               |               |               |            |            |            |          |          |          |          |          |          |          |          |
|  |             | April 19, 1959    | San Gabriel Valley KC, CA      | 183.00        |               |               |            |            |            |          |          |          |          |          |          |          |          |
|  |             | April 26, 1959    | Santa Ana Valley KC, CA        | 193.00        |               |               |            |            |            |          |          |          |          |          |          |          |          |
|  |             | May 24, 1959      | Del Monte KC, CA               | 176.00        |               |               |            |            |            |          |          |          |          |          |          |          |          |
|  |             | June 07, 1959     | Southeast OC of Lynwood, CA    | 197.00        |               |               |            |            |            |          |          |          |          |          |          |          |          |
|  |             | June 20, 1959     | Harbor Cities KC, CA           | 188.00        |               |               |            |            |            |          |          |          |          |          |          |          |          |
| <b>Class score averages and placement totals:</b>    |             |                   |                                | <b>187.40</b> | <b>ERR</b>    | <b>ERR</b>    | <b>ERR</b> | <b>ERR</b> | <b>ERR</b> | <b>0</b> | <b>0</b> | <b>0</b> | <b>0</b> | <b>0</b> | <b>0</b> | <b>0</b> | <b>0</b> |
| <b>Number of times qualifying and in each class:</b> |             |                   |                                | <b>5</b>      | <b>5</b>      | <b>0</b>      | <b>0</b>   | <b>0</b>   | <b>0</b>   | <b>0</b> | <b>0</b> | <b>0</b> | <b>0</b> | <b>0</b> | <b>0</b> | <b>0</b> | <b>0</b> |
| <b>CHAlaska Ann Von Grand</b>                        |             |                   |                                |               |               |               |            |            |            |          |          |          |          |          |          |          |          |
| <i>Novice</i>  |             |                   |                                |               |               |               |            |            |            |          |          |          |          |          |          |          |          |
|  |             | January 25, 1959  | Orange Empire DC, CA           | 188.00        |               |               |            |            |            |          |          |          |          |          |          |          |          |
|  |             | February 15, 1959 | Silver Bay KC of San Diego, CA | 197.00        |               |               |            |            |            |          |          |          |          |          |          |          |          |
| <b>Class score averages and placement totals:</b>    |             |                   |                                | <b>ERR</b>    | <b>192.50</b> | <b>ERR</b>    | <b>ERR</b> | <b>ERR</b> | <b>ERR</b> | <b>0</b> | <b>0</b> | <b>0</b> | <b>0</b> | <b>0</b> | <b>0</b> | <b>0</b> | <b>0</b> |
| <b>Number of times qualifying and in each class:</b> |             |                   |                                | <b>2</b>      | <b>0</b>      | <b>2</b>      | <b>0</b>   | <b>0</b>   | <b>0</b>   | <b>0</b> | <b>0</b> | <b>0</b> | <b>0</b> | <b>0</b> | <b>0</b> | <b>0</b> | <b>0</b> |
| <b>Downriver Big Ben</b>                             |             |                   |                                |               |               |               |            |            |            |          |          |          |          |          |          |          |          |
| <i>Open</i>  |             |                   |                                |               |               |               |            |            |            |          |          |          |          |          |          |          |          |
|  |             | October 18, 1959  | San Fernando KC, CA            | 192.00        |               |               |            |            |            |          |          |          |          |          |          |          |          |
|  |             | December 06, 1959 | Yuma KC, CA                    | 196.00        |               |               |            |            |            |          | 2        |          |          |          |          |          |          |
| <b>Class score averages and placement totals:</b>    |             |                   |                                | <b>ERR</b>    | <b>ERR</b>    | <b>194.00</b> | <b>ERR</b> | <b>ERR</b> | <b>ERR</b> | <b>0</b> | <b>1</b> | <b>0</b> | <b>0</b> | <b>0</b> | <b>0</b> | <b>0</b> | <b>0</b> |
| <b>Number of times qualifying and in each class:</b> |             |                   |                                | <b>2</b>      | <b>0</b>      | <b>0</b>      | <b>2</b>   | <b>0</b>   | <b>0</b>   | <b>0</b> | <b>0</b> | <b>0</b> | <b>0</b> | <b>0</b> | <b>0</b> | <b>0</b> | <b>0</b> |
| <b>Downriver Big Ben</b>                             |             |                   |                                |               |               |               |            |            |            |          |          |          |          |          |          |          |          |
| <i>Novice</i>  |             |                   |                                |               |               |               |            |            |            |          |          |          |          |          |          |          |          |
|  |             | November 07, 1959 | Monroe KC, MI                  | 172.50        |               |               |            |            |            |          |          |          |          |          |          |          |          |
| <b>Class score averages and placement totals:</b>    |             |                   |                                | <b>ERR</b>    | <b>172.50</b> | <b>ERR</b>    | <b>ERR</b> | <b>ERR</b> | <b>ERR</b> | <b>0</b> | <b>0</b> | <b>0</b> | <b>0</b> | <b>0</b> | <b>0</b> | <b>0</b> | <b>0</b> |
| <b>Number of times qualifying and in each class:</b> |             |                   |                                | <b>1</b>      | <b>0</b>      | <b>1</b>      | <b>0</b>   | <b>0</b>   | <b>0</b>   | <b>0</b> | <b>0</b> | <b>0</b> | <b>0</b> | <b>0</b> | <b>0</b> | <b>0</b> | <b>0</b> |
| <b>Frankos Debra</b>                                 |             |                   |                                |               |               |               |            |            |            |          |          |          |          |          |          |          |          |
| <i>Novice</i>  |             |                   |                                |               |               |               |            |            |            |          |          |          |          |          |          |          |          |
|  |             | February 22, 1959 | Heart of America KC, MO        | 196.00        |               |               |            |            |            |          |          |          |          |          |          |          |          |
|  |             | March 07, 1959    | Des Moines OTC, IA             | 196.00        |               |               |            |            |            |          | 2        |          |          |          |          |          |          |
|  |             | March 08, 1959    | Des Moines KC, IA              | 190.00        |               |               |            |            |            |          |          |          |          |          |          |          |          |
| <b>Class score averages and placement totals:</b>    |             |                   |                                | <b>194.00</b> | <b>ERR</b>    | <b>ERR</b>    | <b>ERR</b> | <b>ERR</b> | <b>ERR</b> | <b>0</b> | <b>1</b> | <b>0</b> | <b>0</b> | <b>0</b> | <b>0</b> | <b>0</b> | <b>0</b> |
| <b>Number of times qualifying and in each class:</b> |             |                   |                                | <b>3</b>      | <b>3</b>      | <b>0</b>      | <b>0</b>   | <b>0</b>   | <b>0</b>   | <b>0</b> | <b>0</b> | <b>0</b> | <b>0</b> | <b>0</b> | <b>0</b> | <b>0</b> | <b>0</b> |
| <b>CHKnabllaws Echo V Barre</b>                      |             |                   |                                |               |               |               |            |            |            |          |          |          |          |          |          |          |          |
| <i>Novice</i>  |             |                   |                                |               |               |               |            |            |            |          |          |          |          |          |          |          |          |
|  |             | March 28, 1959    | Oakland KC, CA                 | 170.00        |               |               |            |            |            |          |          |          |          |          |          |          |          |
|  |             | May 17, 1959      | Oakland DTC, CA                | 183.50        |               |               |            |            |            |          |          |          |          |          |          |          |          |
|  |             | November 29, 1959 | San Mateo KC, CA               | 172.00        |               |               |            |            |            |          |          |          |          |          |          |          |          |

| CH   | Dog & Class | Date               | Trial                           | NA     | NB     | OA     | OB  | UA  | UB  | 1st | 2nd | 3rd | 4th | UDX | HIT | M | F |
|--|-------------|--------------------|---------------------------------|--------|--------|--------|-----|-----|-----|-----|-----|-----|-----|-----|-----|---|---|
| <b>Class score averages and placement totals:</b>    |             |                    |                                 | 175.17 | ERR    | ERR    | ERR | ERR | ERR | 0   | 0   | 0   | 0   | 0   | 0   | 0 |   |
| <b>Number of times qualifying and in each class:</b> |             |                    |                                 | 3      | 3      | 0      | 0   | 0   | 0   |     |     |     |     |     |     |   |   |
| <b>CH Little Farms Sir Windy</b>                     |             |                    |                                 |        |        |        |     |     |     |     |     |     |     |     |     |   |   |
| <b>Novice</b>  |             |                    |                                 |        |        |        |     |     |     |     |     |     |     |     |     |   |   |
|  |             | January 10, 1959   | Berrien KC, MI                  |        | 188.00 |        |     |     |     |     | 2   |     |     |     |     |   |   |
| <b>Class score averages and placement totals:</b>    |             |                    |                                 | ERR    | 188.00 | ERR    | ERR | ERR | ERR | 0   | 1   | 0   | 0   | 0   | 0   | 0 |   |
| <b>Number of times qualifying and in each class:</b> |             |                    |                                 | 1      | 0      | 1      | 0   | 0   | 0   |     |     |     |     |     |     |   | m |
| <b>Lord Goliath of Balmville</b>                     |             |                    |                                 |        |        |        |     |     |     |     |     |     |     |     |     |   |   |
| <b>Novice</b>  |             |                    |                                 |        |        |        |     |     |     |     |     |     |     |     |     |   |   |
|  |             | May 24, 1959       | Mid Jersey CDTC, NJ             | 183.00 |        |        |     |     |     |     |     |     |     |     |     |   |   |
|  |             | July 05, 1959      | Wallkill KC, NY                 | 187.00 |        |        |     |     |     |     |     |     |     |     |     |   |   |
|  |             | October 18, 1959   | Patroon DOTC, NY                | 183.00 |        |        |     |     |     |     |     |     |     |     |     |   |   |
| <b>Class score averages and placement totals:</b>    |             |                    |                                 | 184.33 | ERR    | ERR    | ERR | ERR | ERR | 0   | 0   | 0   | 0   | 0   | 0   | 0 |   |
| <b>Number of times qualifying and in each class:</b> |             |                    |                                 | 3      | 3      | 0      | 0   | 0   | 0   |     |     |     |     |     |     |   | m |
| <b>Ludwigs Heidi</b>                                 |             |                    |                                 |        |        |        |     |     |     |     |     |     |     |     |     |   |   |
| <b>Novice</b>  |             |                    |                                 |        |        |        |     |     |     |     |     |     |     |     |     |   |   |
|  |             | January 31, 1959   | Muncie OTC, IN                  | 186.00 |        |        |     |     |     |     |     |     |     |     |     |   |   |
| <b>Class score averages and placement totals:</b>    |             |                    |                                 | 186.00 | ERR    | ERR    | ERR | ERR | ERR | 0   | 0   | 0   | 0   | 0   | 0   | 0 |   |
| <b>Number of times qualifying and in each class:</b> |             |                    |                                 | 1      | 1      | 0      | 0   | 0   | 0   |     |     |     |     |     |     |   | f |
| <b>Panda L'ourse Alpin</b>                           |             |                    |                                 |        |        |        |     |     |     |     |     |     |     |     |     |   |   |
| <b>Novice</b>  |             |                    |                                 |        |        |        |     |     |     |     |     |     |     |     |     |   |   |
|  |             | May 02, 1959       | Fort Wayne OTC, IN              | 189.00 |        |        |     |     |     |     |     |     |     |     |     |   |   |
|  |             | May 03, 1959       | Northeastern Indiana KC, IN     | 193.00 |        |        |     |     |     |     |     |     | 4   |     |     |   |   |
| <b>Class score averages and placement totals:</b>    |             |                    |                                 | 191.00 | ERR    | ERR    | ERR | ERR | ERR | 0   | 0   | 0   | 1   | 0   | 0   | 0 |   |
| <b>Number of times qualifying and in each class:</b> |             |                    |                                 | 2      | 2      | 0      | 0   | 0   | 0   |     |     |     |     |     |     |   | f |
| <b>Pride of The Hilltop</b>                          |             |                    |                                 |        |        |        |     |     |     |     |     |     |     |     |     |   |   |
| <b>Open</b>  |             |                    |                                 |        |        |        |     |     |     |     |     |     |     |     |     |   |   |
|  |             | August 22, 1959    | Newton KC, CT                   |        | 191.50 |        |     |     |     |     |     | 3   |     |     |     |   |   |
| <b>Class score averages and placement totals:</b>    |             |                    |                                 | ERR    | ERR    | 191.50 | ERR | ERR | ERR | 0   | 0   | 1   | 0   | 0   | 0   | 0 |   |
| <b>Number of times qualifying and in each class:</b> |             |                    |                                 | 1      | 0      | 0      | 1   | 0   | 0   |     |     |     |     |     |     |   |   |
| <b>Rolf V Sauliamt</b>                               |             |                    |                                 |        |        |        |     |     |     |     |     |     |     |     |     |   |   |
| <b>Novice</b>  |             |                    |                                 |        |        |        |     |     |     |     |     |     |     |     |     |   |   |
|  |             | November 15, 1959  | Central Ohio KC, OH             | 194.50 |        |        |     |     |     |     |     | 3   |     |     |     |   |   |
| <b>Class score averages and placement totals:</b>    |             |                    |                                 | 194.50 | ERR    | ERR    | ERR | ERR | ERR | 0   | 0   | 1   | 0   | 0   | 0   | 0 |   |
| <b>Number of times qualifying and in each class:</b> |             |                    |                                 | 1      | 1      | 0      | 0   | 0   | 0   |     |     |     |     |     |     |   | m |
| <b>CH Sanctuary Woods Bold Leader</b>                |             |                    |                                 |        |        |        |     |     |     |     |     |     |     |     |     |   |   |
| <b>Novice</b>  |             |                    |                                 |        |        |        |     |     |     |     |     |     |     |     |     |   |   |
|  |             | September 05, 1959 | Wheaton KC, IL                  |        | 183.00 |        |     |     |     |     |     |     |     |     |     |   |   |
|  |             | September 20, 1959 | Steel City KC, IN               |        | 193.50 |        |     |     |     |     |     |     |     |     |     |   |   |
|  |             | October 04, 1959   | Progressive DC of Wayne Co., MI |        | 194.00 |        |     |     |     |     |     |     |     |     |     |   |   |
|  |             | October 18, 1959   | South Side All-Breed DOC, IL    |        | 193.00 |        |     |     |     |     |     |     |     |     |     |   |   |

| CH   | Dog & Class       | Date                             | Trial  | NA     | NB     | OA     | OB  | UA  | UB  | 1st | 2nd | 3rd | 4th | UDX | HIT | M | F |  |
|--|-------------------|----------------------------------|--------|--------|--------|--------|-----|-----|-----|-----|-----|-----|-----|-----|-----|---|---|--|
| <b>Class score averages and placement totals:</b>    |                   |                                  |        | ERR    | 190.88 | ERR    | ERR | ERR | ERR | 0   | 0   | 0   | 0   | 0   | 0   | 0 |   |  |
| <b>Number of times qualifying and in each class:</b> |                   |                                  |        | 4      | 0      | 4      | 0   | 0   | 0   | 0   | 0   | 0   | 0   | 0   | 0   | 0 |   |  |
| <b>CH Sanctuary Woods Gadabout</b>                   |                   |                                  |        |        |        |        |     |     |     |     |     |     |     |     |     |   |   |  |
| <b>Novice</b>  |                   |                                  |        |        |        |        |     |     |     |     |     |     |     |     |     |   |   |  |
|  | April 12, 1959    | Decatur OTC, IL                  |        | 189.50 |        |        |     |     |     |     |     |     |     |     |     |   |   |  |
| <b>Class score averages and placement totals:</b>    |                   |                                  |        | ERR    | 189.50 | ERR    | ERR | ERR | ERR | 0   | 0   | 0   | 0   | 0   | 0   | 0 |   |  |
| <b>Number of times qualifying and in each class:</b> |                   |                                  |        | 1      | 0      | 1      | 0   | 0   | 0   | 0   | 0   | 0   | 0   | 0   | 0   | 0 |   |  |
| <b>Sigend Augusta V Joggi V Gerd</b>                 |                   |                                  |        |        |        |        |     |     |     |     |     |     |     |     |     |   |   |  |
| <b>Novice</b>  |                   |                                  |        |        |        |        |     |     |     |     |     |     |     |     |     |   |   |  |
|  | June 06, 1959     | Kalamazoo KC, MI                 |        | 172.50 |        |        |     |     |     |     |     |     |     |     |     |   |   |  |
| <b>Class score averages and placement totals:</b>    |                   |                                  |        | ERR    | 172.50 | ERR    | ERR | ERR | ERR | 0   | 0   | 0   | 0   | 0   | 0   | 0 |   |  |
| <b>Number of times qualifying and in each class:</b> |                   |                                  |        | 1      | 0      | 1      | 0   | 0   | 0   | 0   | 0   | 0   | 0   | 0   | 0   | 0 |   |  |
| <b>Weavers Christy Cepheus</b>                       |                   |                                  |        |        |        |        |     |     |     |     |     |     |     |     |     |   |   |  |
| <b>Novice</b>  |                   |                                  |        |        |        |        |     |     |     |     |     |     |     |     |     |   |   |  |
|  | March 08, 1959    | Mad River Valley KC, OH          | 194.50 |        |        |        |     |     |     |     |     |     |     |     |     |   |   |  |
|  | April 12, 1959    | Dayton KC, OH                    | 194.50 |        |        |        |     |     |     |     |     | 3   |     |     |     |   |   |  |
|  | April 19, 1959    | Central Ohio KC, OH              | 191.00 |        |        |        |     |     |     |     |     |     |     |     |     |   |   |  |
| <b>Class score averages and placement totals:</b>    |                   |                                  |        | 193.33 | ERR    | ERR    | ERR | ERR | ERR | 0   | 0   | 1   | 0   | 0   | 0   | 0 |   |  |
| <b>Number of times qualifying and in each class:</b> |                   |                                  |        | 3      | 3      | 0      | 0   | 0   | 0   | 0   | 0   | 0   | 0   | 0   | 0   | 0 |   |  |
| <b>Zwinghof Ron D Bout V Zwingo</b>                  |                   |                                  |        |        |        |        |     |     |     |     |     |     |     |     |     |   |   |  |
| <b>Novice</b>  |                   |                                  |        |        |        |        |     |     |     |     |     |     |     |     |     |   |   |  |
|  | November 29, 1959 | Rand Park DTC of Des Plaines, IL | 190.50 |        |        |        |     |     |     |     |     |     |     |     |     |   |   |  |
| <b>Class score averages and placement totals:</b>    |                   |                                  |        | 190.50 | ERR    | ERR    | ERR | ERR | ERR | 0   | 0   | 0   | 0   | 0   | 0   | 0 | 0 |  |
| <b>Number of times qualifying and in each class:</b> |                   |                                  |        | 1      | 1      | 0      | 0   | 0   | 0   | 0   | 0   | 0   | 0   | 0   | 0   | 0 | 0 |  |
| <b>Overall class averages and placement totals:</b>  |                   |                                  |        | 187.75 | 187.10 | 193.17 | ERR | ERR | ERR | 0   | 3   | 3   | 1   | 0   | 0   | 0 |   |  |
| <b>Overall qualifying scores:</b>                    |                   |                                  |        | 35     | 22     | 10     | 3   | 0   | 0   | 0   | 0   | 0   | 0   | 0   | 0   | 0 |   |  |

Obedience Scores changed to current system in 1948. Prior to 1948 the scoring system was different.  
The Maximum Early Scores were: Novice 100 points, Open 250 points & Utility 400 points.  
Early Titles required ONLY TWO qualifying scores.

© This Article is Copyrighted by John Cox  
The Saint Bernard National Archives

# Saint Bernard AKC Regular Novice {CD} Obedience Scores For 1959

\*\*\* Go to the Saint Bernard National Archive's database page to view a dog's titles and dates earned \*\*\*

| CH   | Dog | Date              | Trial                          | NA            | NB            | 1st      | 2nd      | 3rd      | 4th      | HIT      | A        | N        | S        | M        | F        |
|--|-----|-------------------|--------------------------------|---------------|---------------|----------|----------|----------|----------|----------|----------|----------|----------|----------|----------|
| <b>CH Alaric Abbott Von Grand</b>                    |     |                   |                                |               |               |          |          |          |          |          |          |          |          |          |          |
|  |     | April 19, 1959    | San Gabriel Valley KC, CA      | 183.00        |               |          |          |          |          |          |          |          |          |          |          |
|  |     | April 26, 1959    | Santa Ana Valley KC, CA        | 193.00        |               |          |          |          |          |          |          |          |          |          |          |
|  |     | May 24, 1959      | Del Monte KC, CA               | 176.00        |               |          |          |          |          |          |          |          |          |          |          |
|  |     | June 07, 1959     | Southeast OC of Lynwood, CA    | 197.00        |               |          |          |          |          |          |          |          |          |          |          |
|  |     | June 20, 1959     | Harbor Cities KC, CA           | 188.00        |               |          |          |          |          |          |          |          |          |          |          |
| <b>Class score averages and placement totals:</b>    |     |                   |                                | <b>187.40</b> | <b>ERR</b>    | <b>0</b> | <b>0</b> | <b>0</b> | <b>0</b> | <b>0</b> | <b>0</b> | <b>0</b> | <b>0</b> | <b>0</b> | <b>0</b> |
| <b>Number of times qualifying and in each class:</b> |     |                   |                                | <b>5</b>      | <b>5</b>      | <b>0</b> |          |          |          |          |          |          |          |          | <b>m</b> |
| <b>CH Alaska Ann Von Grand</b>                       |     |                   |                                |               |               |          |          |          |          |          |          |          |          |          |          |
|  |     | January 25, 1959  | Orange Empire DC, CA           | 188.00        |               |          |          |          |          |          |          |          |          |          |          |
|  |     | February 15, 1959 | Silver Bay KC of San Diego, CA | 197.00        |               |          |          |          |          |          |          |          |          |          |          |
| <b>Class score averages and placement totals:</b>    |     |                   |                                | <b>ERR</b>    | <b>192.50</b> | <b>0</b> | <b>0</b> | <b>0</b> | <b>0</b> | <b>0</b> | <b>0</b> | <b>0</b> | <b>0</b> | <b>0</b> | <b>f</b> |
| <b>Number of times qualifying and in each class:</b> |     |                   |                                | <b>0</b>      | <b>2</b>      |          |          |          |          |          |          |          |          |          |          |
| <b>Downriver Big Ben</b>                             |     |                   |                                |               |               |          |          |          |          |          |          |          |          |          |          |
|  |     | November 07, 1959 | Monroe KC, MI                  | 172.50        |               |          |          |          |          |          |          |          |          |          |          |
| <b>Class score averages and placement totals:</b>    |     |                   |                                | <b>ERR</b>    | <b>172.50</b> | <b>0</b> | <b>0</b> | <b>0</b> | <b>0</b> | <b>0</b> | <b>0</b> | <b>0</b> | <b>0</b> | <b>0</b> | <b>m</b> |
| <b>Number of times qualifying and in each class:</b> |     |                   |                                | <b>0</b>      | <b>1</b>      |          |          |          |          |          |          |          |          |          |          |
| <b>Frankos Debra</b>                                 |     |                   |                                |               |               |          |          |          |          |          |          |          |          |          |          |
|  |     | February 22, 1959 | Heart of America KC, MO        | 196.00        |               |          |          |          |          |          |          |          |          |          |          |
|  |     | March 07, 1959    | Des Moines OTC, IA             | 196.00        |               | 2        |          |          |          |          |          |          |          |          |          |
|  |     | March 08, 1959    | Des Moines KC, IA              | 190.00        |               |          |          |          |          |          |          |          |          |          |          |
| <b>Class score averages and placement totals:</b>    |     |                   |                                | <b>194.00</b> | <b>ERR</b>    | <b>0</b> | <b>1</b> | <b>0</b> | <b>0</b> | <b>0</b> | <b>0</b> | <b>0</b> | <b>0</b> | <b>0</b> |          |
| <b>Number of times qualifying and in each class:</b> |     |                   |                                | <b>3</b>      | <b>3</b>      | <b>0</b> |          |          |          |          |          |          |          |          |          |
| <b>CH Knabllaws Echo V Barre</b>                     |     |                   |                                |               |               |          |          |          |          |          |          |          |          |          |          |
|  |     | March 28, 1959    | Oakland KC, CA                 | 170.00        |               |          |          |          |          |          |          |          |          |          |          |
|  |     | May 17, 1959      | Oakland DTC, CA                | 183.50        |               |          |          |          |          |          |          |          |          |          |          |
|  |     | November 29, 1959 | San Mateo KC, CA               | 172.00        |               |          |          |          |          |          |          |          |          |          |          |
| <b>Class score averages and placement totals:</b>    |     |                   |                                | <b>175.17</b> | <b>ERR</b>    | <b>0</b> | <b>0</b> | <b>0</b> | <b>0</b> | <b>0</b> | <b>0</b> | <b>0</b> | <b>0</b> | <b>0</b> |          |
| <b>Number of times qualifying and in each class:</b> |     |                   |                                | <b>3</b>      | <b>3</b>      | <b>0</b> |          |          |          |          |          |          |          |          |          |
| <b>CH Little Farms Sir Windy</b>                     |     |                   |                                |               |               |          |          |          |          |          |          |          |          |          |          |
|  |     | January 10, 1959  | Berrien KC, MI                 | 188.00        |               | 2        |          |          |          |          |          |          |          |          |          |
| <b>Class score averages and placement totals:</b>    |     |                   |                                | <b>ERR</b>    | <b>188.00</b> | <b>0</b> | <b>1</b> | <b>0</b> | <b>0</b> | <b>0</b> | <b>0</b> | <b>0</b> | <b>0</b> | <b>0</b> | <b>m</b> |
| <b>Number of times qualifying and in each class:</b> |     |                   |                                | <b>0</b>      | <b>1</b>      |          |          |          |          |          |          |          |          |          |          |
| <b>Lord Goliath of Balmville</b>                     |     |                   |                                |               |               |          |          |          |          |          |          |          |          |          |          |
|  |     | May 24, 1959      | Mid Jersey CDTC, NJ            | 183.00        |               |          |          |          |          |          |          |          |          |          |          |
|  |     | July 05, 1959     | Wallkill KC, NY                | 187.00        |               |          |          |          |          |          |          |          |          |          |          |
|  |     | October 18, 1959  | Patroon DOTC, NY               | 183.00        |               |          |          |          |          |          |          |          |          |          |          |



| CH   | Dog                | Date                             | Trial | NA     | NB     | 1st | 2nd | 3rd | 4th | HIT | A | N | S | M | F |
|--|--------------------|----------------------------------|-------|--------|--------|-----|-----|-----|-----|-----|---|---|---|---|---|
| <b>Class score averages and placement totals:</b>    |                    |                                  |       | 184.33 | ERR    | 0   | 0   | 0   | 0   | 0   | 0 | 0 | 0 |   |   |
| <b>Number of times qualifying and in each class:</b> |                    |                                  |       | 3      | 3      | 0   |     |     |     |     |   |   |   |   | m |
| <b>Ludwigs Heidi</b>                                 |                    |                                  |       |        |        |     |     |     |     |     |   |   |   |   |   |
|  | January 31, 1959   | Muncie OTC, IN                   |       | 186.00 |        |     |     |     |     |     |   |   |   |   |   |
| <b>Class score averages and placement totals:</b>    |                    |                                  |       | 186.00 | ERR    | 0   | 0   | 0   | 0   | 0   | 0 | 0 | 0 |   | f |
| <b>Number of times qualifying and in each class:</b> |                    |                                  |       | 1      | 1      | 0   |     |     |     |     |   |   |   |   |   |
| <b>Panda L'ourse Alpin</b>                           |                    |                                  |       |        |        |     |     |     |     |     |   |   |   |   |   |
|  | May 02, 1959       | Fort Wayne OTC, IN               |       | 189.00 |        |     |     |     |     |     |   |   |   |   |   |
|  | May 03, 1959       | Northeastern Indiana KC, IN      |       | 193.00 |        |     |     |     | 4   |     |   |   |   |   |   |
| <b>Class score averages and placement totals:</b>    |                    |                                  |       | 191.00 | ERR    | 0   | 0   | 0   | 1   | 0   | 0 | 0 | 0 |   | f |
| <b>Number of times qualifying and in each class:</b> |                    |                                  |       | 2      | 2      | 0   |     |     |     |     |   |   |   |   |   |
| <b>Rolf V Sauliamt</b>                               |                    |                                  |       |        |        |     |     |     |     |     |   |   |   |   |   |
|  | November 15, 1959  | Central Ohio KC, OH              |       | 194.50 |        |     |     | 3   |     |     |   |   |   |   |   |
| <b>Class score averages and placement totals:</b>    |                    |                                  |       | 194.50 | ERR    | 0   | 0   | 1   | 0   | 0   | 0 | 0 | 0 |   | m |
| <b>Number of times qualifying and in each class:</b> |                    |                                  |       | 1      | 1      | 0   |     |     |     |     |   |   |   |   |   |
| <b>CHSanctuary Woods Bold Leader</b>                 |                    |                                  |       |        |        |     |     |     |     |     |   |   |   |   |   |
|  | September 05, 1959 | Wheaton KC, IL                   |       | 183.00 |        |     |     |     |     |     |   |   |   |   |   |
|  | September 20, 1959 | Steel City KC, IN                |       | 193.50 |        |     |     |     |     |     |   |   |   |   |   |
|  | October 04, 1959   | Progressive DC of Wayne Co., MI  |       | 194.00 |        |     |     |     |     |     |   |   |   |   |   |
|  | October 18, 1959   | South Side All-Breed DOC, IL     |       | 193.00 |        |     |     |     |     |     |   |   |   |   |   |
| <b>Class score averages and placement totals:</b>    |                    |                                  |       | ERR    | 190.88 | 0   | 0   | 0   | 0   | 0   | 0 | 0 | 0 |   | m |
| <b>Number of times qualifying and in each class:</b> |                    |                                  |       | 4      | 0      | 4   |     |     |     |     |   |   |   |   |   |
| <b>CHSanctuary Woods Gadabout</b>                    |                    |                                  |       |        |        |     |     |     |     |     |   |   |   |   |   |
|  | April 12, 1959     | Decatur OTC, IL                  |       | 189.50 |        |     |     |     |     |     |   |   |   |   |   |
| <b>Class score averages and placement totals:</b>    |                    |                                  |       | ERR    | 189.50 | 0   | 0   | 0   | 0   | 0   | 0 | 0 | 0 |   | m |
| <b>Number of times qualifying and in each class:</b> |                    |                                  |       | 1      | 0      | 1   |     |     |     |     |   |   |   |   |   |
| <b>Sigend Augusta V Joggi V Gerd</b>                 |                    |                                  |       |        |        |     |     |     |     |     |   |   |   |   |   |
|  | June 06, 1959      | Kalamazoo KC, MI                 |       | 172.50 |        |     |     |     |     |     |   |   |   |   |   |
| <b>Class score averages and placement totals:</b>    |                    |                                  |       | ERR    | 172.50 | 0   | 0   | 0   | 0   | 0   | 0 | 0 | 0 |   |   |
| <b>Number of times qualifying and in each class:</b> |                    |                                  |       | 1      | 0      | 1   |     |     |     |     |   |   |   |   |   |
| <b>Weavers Christy Cepheus</b>                       |                    |                                  |       |        |        |     |     |     |     |     |   |   |   |   |   |
|  | March 08, 1959     | Mad River Valley KC, OH          |       | 194.50 |        |     |     |     |     |     |   |   |   |   |   |
|  | April 12, 1959     | Dayton KC, OH                    |       | 194.50 |        |     |     | 3   |     |     |   |   |   |   |   |
|  | April 19, 1959     | Central Ohio KC, OH              |       | 191.00 |        |     |     |     |     |     |   |   |   |   |   |
| <b>Class score averages and placement totals:</b>    |                    |                                  |       | 193.33 | ERR    | 0   | 0   | 1   | 0   | 0   | 0 | 0 | 0 |   | f |
| <b>Number of times qualifying and in each class:</b> |                    |                                  |       | 3      | 3      | 0   |     |     |     |     |   |   |   |   |   |
| <b>Zwinghof Ron D Bout V Zwingo</b>                  |                    |                                  |       |        |        |     |     |     |     |     |   |   |   |   |   |
|  | November 29, 1959  | Rand Park DTC of Des Plaines, IL |       | 190.50 |        |     |     |     |     |     |   |   |   |   |   |
| <b>Class score averages and placement totals:</b>    |                    |                                  |       | 190.50 | ERR    | 0   | 0   | 0   | 0   | 0   | 0 | 0 | 0 |   |   |
| <b>Number of times qualifying and in each class:</b> |                    |                                  |       | 1      | 1      | 0   |     |     |     |     |   |   |   |   |   |

| <u>CH</u>                                    | <u>Dog</u> | <u>Date</u> | <u>Trial</u> | <u>NA</u> | <u>NB</u> | <u>1st</u> | <u>2nd</u> | <u>3rd</u> | <u>4th</u> | <u>HIT</u> | <u>A</u> | <u>N</u> | <u>S</u> | <u>M</u> | <u>F</u> |
|--|------------|-------------|--------------|-----------|-----------|------------|------------|------------|------------|------------|----------|----------|----------|----------|----------|
| Overall class averages and placement totals: |            |             |              | 187.75    | 187.10    | 0          | 2          | 2          | 1          | 0          | 0        | 0        | 0        |          |          |
| Overall qualifying scores:                   |            |             |              | 32        | 22        | 10         |            |            |            |            |          |          |          |          |          |

\*Code\* A = All Breed Trial; N = SBC of America's Trial; S = Saint Bernard Independent Specialty

The HIT (High In Trial) total reflects ONLY the HITs from the Novice Classes.

The Dog may have earned other HITs from the Open or Utility not shown on the Novice Report

Obedience Scores changed to current system in 1948. Prior to 1948 the scoring system was different.

The Maximum Early Scores were: Novice 100 points, Open 250 points & Utility 400 points.

Early Titles required ONLY TWO qualifying scores.

© This Article is Copyrighted by John Cox  
The Saint Bernard National Archives

# Saint Bernard AKC Regular Open {CDX} Obedience Scores For 1959

\*\*\* Go to the Saint Bernard National Archive's database page to view a dog's titles and dates earned \*\*\*

| CH   | Dog | Date              | Trial               | OA            | OB         | 1st      | 2nd      | 3rd      | 4th      | UDX      | HIT      | A        | N        | S        | M        | F        |
|--|-----|-------------------|---------------------|---------------|------------|----------|----------|----------|----------|----------|----------|----------|----------|----------|----------|----------|
| <b>CH Alaska Ann Von Grand</b>                       |     | October 18, 1959  | San Fernando KC, CA | 192.00        |            |          |          |          |          |          |          |          |          |          |          |          |
|  |     | December 06, 1959 | Yuma KC, CA         | 196.00        |            |          | 2        |          |          |          |          |          |          |          |          |          |
| <b>Class score averages and placement totals:</b>    |     |                   |                     | <b>194.00</b> | <b>ERR</b> | <b>0</b> | <b>1</b> | <b>0</b> | <b>0</b> | <b>0</b> | <b>0</b> | <b>0</b> | <b>0</b> | <b>0</b> | <b>0</b> | <b>0</b> |
| <b>Number of times qualifying and in each class:</b> |     |                   |                     | <b>2</b>      | <b>2</b>   | <b>0</b> |          |          |          |          |          |          |          |          |          | <b>f</b> |
| <b>Pride of The Hilltop</b>                          |     | August 22, 1959   | Newton KC, CT       | 191.50        |            |          |          | 3        |          |          |          |          |          |          |          |          |
| <b>Class score averages and placement totals:</b>    |     |                   |                     | <b>191.50</b> | <b>ERR</b> | <b>0</b> | <b>0</b> | <b>1</b> | <b>0</b> | <b>0</b> | <b>0</b> | <b>0</b> | <b>0</b> | <b>0</b> | <b>0</b> | <b>0</b> |
| <b>Number of times qualifying and in each class:</b> |     |                   |                     | <b>1</b>      | <b>1</b>   | <b>0</b> |          |          |          |          |          |          |          |          |          |          |
| <b>Overall class averages and placement totals:</b>  |     |                   |                     | <b>193.17</b> | <b>ERR</b> | <b>0</b> | <b>1</b> | <b>1</b> | <b>0</b> | <b>0</b> | <b>0</b> | <b>0</b> | <b>0</b> | <b>0</b> | <b>0</b> | <b>0</b> |
| <b>Overall qualifying scores:</b>                    |     |                   |                     | <b>3</b>      | <b>3</b>   | <b>0</b> |          |          |          |          |          |          |          |          |          |          |

\*Code\* A = All Breed Trial; N = SBC of America's Trial; S = Saint Bernard Independent Specialty

The HIT (High In Trial) total reflects ONLY the HITs from the Open Classes.

The Dog may have earned other HITs from the Novice or Utility Classes not shown on the Open Report

Obedience Scores changed to current system in 1948. Prior to 1948 the scoring system was different.

The Maximum Early Scores were: Novice 100 points, Open 250 points & Utility 400 points.

Early Titles required ONLY TWO qualifying scores.

© This Article is Copyrighted by John Cox  
The Saint Bernard National Archives